

Datasheet for ABIN570926
anti-TMPRSS2 antibody (Internal Region)[Go to Product page](#)

4 Images

Overview

Quantity:	100 µg
Target:	TMPRSS2
Binding Specificity:	Internal Region
Reactivity:	Human
Host:	Goat
Clonality:	Polyclonal
Conjugate:	This TMPRSS2 antibody is un-conjugated
Application:	Western Blotting (WB), Immunohistochemistry (IHC), ELISA

Product Details

Purpose:	TMPRSS2
Immunogen:	Peptide with sequence C-TDWIYRQMRADG, from the internal region of the protein sequence according to NP_005647.2.
Sequence:	TDWIYRQMRA DG
Isotype:	IgG
Cross-Reactivity:	Human
Purification:	Purified from goat serum by ammonium sulphate precipitation followed by antigen affinity chromatography using the immunizing peptide.
Grade:	Verified

Target Details

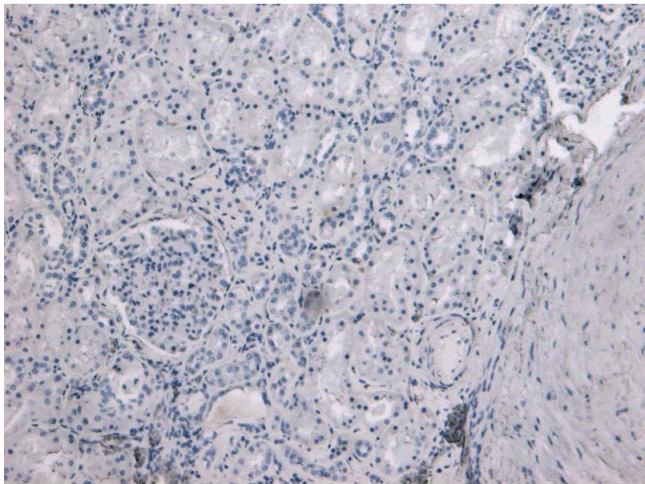
Target:	TMPRSS2
Alternative Name:	TMPRSS2 (TMPRSS2 Products)
Background:	Transmembrane protease, serine 2, PRSS10, epitheliasin, TMPS2
Gene ID:	7113
NCBI Accession:	NP_005647
Pathways:	SARS-CoV-2 Protein Interactome

Application Details

Application Notes:	Immunohistochemistry: Paraffin embedded Human Kidney. Recommended concentration: 6-8 µg/mL. Western Blot: Approx 55-60 kDa band observed in Human Pancreas and Kidney lysates (calculated MW of 53.9 kDa according to NP_005647.2). This molecular weight is routinely observed by other sources. Recommended concentration: 0.1-0.5 µg/mL. Primary incubati Peptide ELISA: antibody detection limit dilution 1:8000.
Restrictions:	For Research Use only

Handling

Format:	Liquid
Concentration:	0.5 mg/mL
Buffer:	Supplied at 0.5 mg/mL in Tris saline, 0.02 % sodium azide, pH 7.3 with 0.5 % bovine serum albumin.
Preservative:	Sodium azide
Precaution of Use:	This product contains Sodium azide: a POISONOUS AND HAZARDOUS SUBSTANCE which should be handled by trained staff only.
Handling Advice:	Minimize freezing and thawing.
Storage:	-20 °C
Storage Comment:	Aliquot and store at -20°C, with minimal freeze/thawing. A working aliquot may be refrigerated at 4°C for a few weeks and still remain viable.



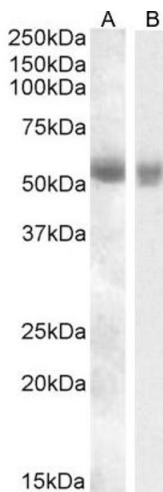
Immunohistochemistry

Image 1. (ABIN570926) Negative Control showing staining of paraffin embedded Human Kidney, with no primary antibody.



Western Blotting

Image 2. ABIN570926 (0.1 µg/ml) staining of Human Pancreas Lysate (35 µg protein in RIPA buffer). Primary incubation was 1 hour. Detected by chemiluminescence.



Western Blotting

Image 3. ABIN570926 (0.5 µg/mL) staining of Human Pancreas and Kidney Lysates (35 µg protein in RIPA buffer). Detected by chemiluminescence.

Please check the [product details page](#) for more images. Overall 4 images are available for ABIN570926.