



[Go to Product page](#)

Datasheet for ABIN5709273

CEL2A Protein (AA 29-269) (His tag)

1 Image

Overview

Quantity:	100 µg
Target:	CEL2A
Protein Characteristics:	AA 29-269
Origin:	Human
Source:	Escherichia coli (E. coli)
Protein Type:	Recombinant
Purification tag / Conjugate:	This CEL2A protein is labelled with His tag.
Application:	SDS-PAGE (SDS)

Product Details

Sequence:	VVGGEEARPN SWPWQVSLQY SSNGKWYHTC GGSLIANSWV LTAAHCISSS RTYRVGLGRH NLYVAESGSL AVSVSKIIVH KDWNSNQISK GNDIALLKLA NPVSLTDKIQ LACLPPAGTI LPNNYPCYVT GWGRLQTNGA VPDVLQQGRL LVVDYATCSS SAWWGSSVKT SMICAGGDGV ISSCNGDSSG PLNCQASDGR WQVHGIVSFG SRLGCNYYHK PSVFTRVSNY IDWINSVIAN N
Purification:	SDS-PAGE
Purity:	> 90 %

Target Details

Target:	CEL2A
Alternative Name:	CEL2A (CEL2A Products)
Background:	Acts upon elastin.

Target Details

Molecular Weight: 30 kDa

UniProt: [P08217](#)

Application Details

Application Notes: Optimal working dilution should be determined by the investigator.

Restrictions: For Research Use only

Handling

Format: Liquid

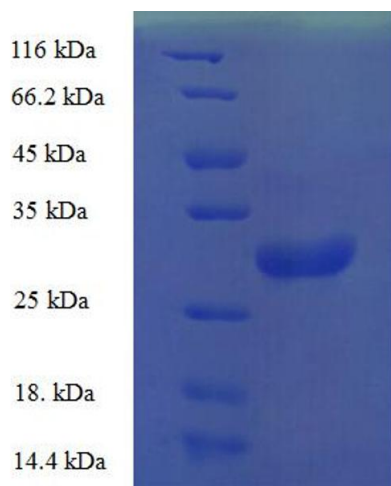
Concentration: 0.1-2 mg/mL

Buffer: 20 mM Tris-HCl based buffer, pH 8.0

Storage: -80 °C, 4 °C, -20 °C

Storage Comment: Store at -20°C, for extended storage, conserve at -20°C or -80°C. Repeated freezing and thawing is not recommended. Store working aliquots at 4°C for up to one week.

Images



SDS-PAGE

Image 1.