

Datasheet for ABIN5709303
CNN3 Protein (AA 2-329, partial) (His tag)



[Go to Product page](#)

1 Image

Overview

Quantity:	100 µg
Target:	CNN3
Protein Characteristics:	AA 2-329, partial
Origin:	Human
Source:	Escherichia coli (E. coli)
Protein Type:	Recombinant
Purification tag / Conjugate:	This CNN3 protein is labelled with His tag.
Application:	SDS-PAGE (SDS)

Product Details

Sequence:	THFNKGPSYG LSAEVKNKIA SKYDHQAEED LRNWIEEVTG MSIGPNFQLG LKDGII LCEL INKLQPGSVK KVNESLNWP QLENIGNFIK AIQAYGMKPH DIFEANDLFE NGNMTQVQTT LVALAGLAKT KGFHTTIDIG VKYAEKQTRR FDEGKLGKAGQ SVIGLQMGTN KCASQAGMTA YGTRRHLYDP KMQTDKPFQD TTISLQMGTN KGASQAGMLA PGTRRDIYDQ KLTLQPVDNS TISLQMGTNK VASQKGMSVY GLGRQVYDPK YCAAPTEPVI HNGSQGTGTN GSEISDSYDQ AEYPDEYHGE YQDDYPRDYQ YSDQGIDY
Purification:	SDS-PAGE
Purity:	> 90 %

Target Details

Target:	CNN3
---------	------

Target Details

Alternative Name:	CNN3 (CNN3 Products)
Background:	Thin filament-associated protein that is implicated in the regulation and modulation of smooth muscle contraction. It is capable of binding to actin, calmodulin, troponin C and tropomyosin. The interaction of calponin with actin inhibits the actomyosin Mg-ATPase activity.
Molecular Weight:	40.4 kDa
UniProt:	Q15417

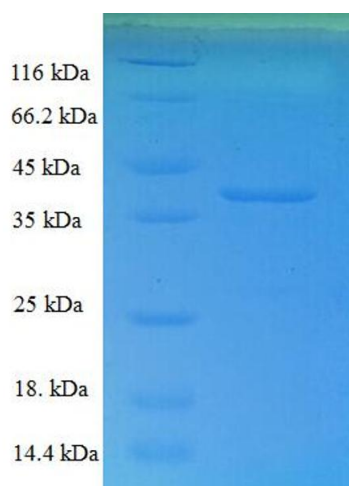
Application Details

Application Notes:	Optimal working dilution should be determined by the investigator.
Restrictions:	For Research Use only

Handling

Format:	Liquid
Concentration:	0.1-2 mg/mL
Buffer:	20 mM Tris-HCl based buffer, pH 8.0
Storage:	-80 °C, 4 °C, -20 °C
Storage Comment:	Store at -20°C, for extended storage, conserve at -20°C or -80°C. Repeated freezing and thawing is not recommended. Store working aliquots at 4°C for up to one week.

Images



SDS-PAGE

Image 1.