



Datasheet for ABIN570933

anti-Apolipoprotein M antibody (Internal Region)



[Go to Product page](#)

2 Images

Overview

| | |
|----------------------|----------------------------------------------------------|
| Quantity: | 100 µg |
| Target: | Apolipoprotein M (APOM) |
| Binding Specificity: | Internal Region |
| Reactivity: | Human |
| Host: | Goat |
| Clonality: | Polyclonal |
| Conjugate: | This Apolipoprotein M antibody is un-conjugated |
| Application: | Western Blotting (WB), Immunohistochemistry (IHC), ELISA |

Product Details

| | |
|-------------------|---------------------------------------------------------------------------------------------------------------------------------------|
| Purpose: | Apolipoprotein M (mouse) |
| Immunogen: | Peptide with sequence C-KGNMELRTEGRPD, from the internal region of the protein sequence according to NP_061286.1. |
| Sequence: | KGNMELRTEG RPD |
| Isotype: | IgG |
| Cross-Reactivity: | Mouse, Rat |
| Purification: | Purified from goat serum by ammonium sulphate precipitation followed by antigen affinity chromatography using the immunizing peptide. |
| Grade: | Verified |

Target Details

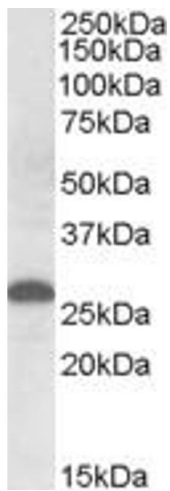
| | |
|-------------------|--------------------------------------------------|
| Target: | Apolipoprotein M (APOM) |
| Alternative Name: | Apom (APOM Products) |
| Background: | Apom, apolipoprotein M, G3a, NG20, 1190010019Rik |
| Gene ID: | 55938, 55939 |
| NCBI Accession: | NP_061286 |

Application Details

| | |
|--------------------|-----------------------------------------------------------------------------------------------------------------------------------------------------------------------------------------------------------------------------------------------------------------------------------------------------------------------------------------------------------------------------------------------------------------------------------------------------------|
| Application Notes: | <p>Immunohistochemistry: Paraffin embedded Human Liver. Recommended concentration: 3.75 μg/mL.</p> <p>Western Blot: Approx. 26 kDa band observed in Human Placenta lysates (calculated MW of 21.3 kDa according to NP_061286.1). The observed molecular weight corresponds to earlier findings in literature with different antibodies (Xu and Dahlbäck, J Biol Chem.</p> <p>Peptide ELISA: antibody detection limit dilution 1:16000.</p> |
| Restrictions: | For Research Use only |

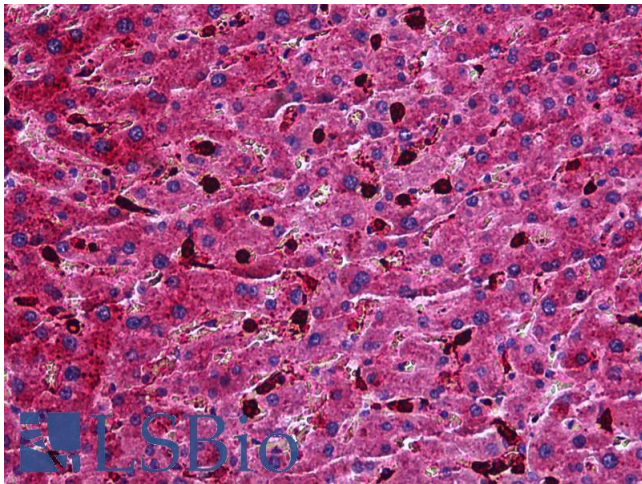
Handling

| | |
|--------------------|------------------------------------------------------------------------------------------------------------------------------------------------|
| Format: | Liquid |
| Concentration: | 0.5 mg/mL |
| Buffer: | Supplied at 0.5 mg/mL in Tris saline, 0.02 % sodium azide, pH 7.3 with 0.5 % bovine serum albumin. |
| Preservative: | Sodium azide |
| Precaution of Use: | This product contains Sodium azide: a POISONOUS AND HAZARDOUS SUBSTANCE which should be handled by trained staff only. |
| Handling Advice: | Minimize freezing and thawing. |
| Storage: | -20 °C |
| Storage Comment: | Aliquot and store at -20°C, with minimal freeze/thawing. A working aliquot may be refrigerated at 4°C for a few weeks and still remain viable. |



Western Blotting

Image 1. ABIN570933 (0.5 μ g/ml) staining of Human Placenta lysate (35 μ g protein in RIPA buffer). Primary incubation was 1 hour. Detected by chemiluminescence.



Immunohistochemistry

Image 2. ABIN570933 (3.75 μ g/ml) staining of paraffin embedded Human Liver. Steamed antigen retrieval with citrate buffer pH 6, AP-staining.