

Datasheet for ABIN5709339

CSF2RA Protein (AA 23-320) (His-SUMO Tag)[Go to Product page](#)**1** Image

Overview

Quantity:	100 µg
Target:	CSF2RA
Protein Characteristics:	AA 23-320
Origin:	Human
Source:	Escherichia coli (E. coli)
Protein Type:	Recombinant
Purification tag / Conjugate:	This CSF2RA protein is labelled with His-SUMO Tag.
Application:	SDS-PAGE (SDS)

Product Details

Sequence:	EKSDLRTVAP ASSLNVRFDS RTMNLSWDCQ ENTTFSKCFL TDKKNRVVEP RLSNNECSCT FREICLHEGV TFEVHVNTSQ RGFQQKLLYP NSGREGTAAQ NFSCFIYNAD LMNCTWARGP TAPRDVQYFL YIRNSKRRRE IRCPYYIQDS GTHVGCHLDN LSGLTSRNYF LVNGTSREIG IQFFDSSLDT KKIERFNPPS NVTVRCNTTH CLVRWKQPRT YQKLSYLDQF YQLDVHRKNT QPGTENLLIN VSGDLENRYN FPSSEPRAKH SVKIRAADVR ILNWSSWSEA IEFGSDDG
Purification:	SDS-PAGE
Purity:	> 90 %

Target Details

Target:	CSF2RA
Alternative Name:	CSF2R (CSF2RA Products)

Target Details

Background:	Low affinity receptor for granulocyte-macrophage colony-stimulating factor. Transduces a signal that results in the proliferation, differentiation, and functional activation of hatopoietic cells.
Molecular Weight:	50.5 kDa
UniProt:	P15509
Pathways:	JAK-STAT Signaling

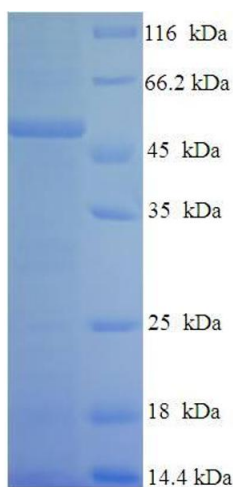
Application Details

Application Notes:	Optimal working dilution should be determined by the investigator.
Restrictions:	For Research Use only

Handling

Format:	Liquid
Concentration:	0.1-2 mg/mL
Buffer:	20 mM Tris-HCl based buffer, pH 8.0
Storage:	-80 °C,4 °C,-20 °C
Storage Comment:	Store at -20°C, for extended storage, conserve at -20°C or -80°C. Repeated freezing and thawing is not recommended. Store working aliquots at 4°C for up to one week.

Images



SDS-PAGE

Image 1.