

Datasheet for ABIN570934
anti-TRPC4 antibody (Internal Region)



[Go to Product page](#)

3 Images

Overview

Quantity:	100 µg
Target:	TRPC4
Binding Specificity:	Internal Region
Reactivity:	Human, Mouse, Rat
Host:	Goat
Clonality:	Polyclonal
Conjugate:	This TRPC4 antibody is un-conjugated
Application:	Western Blotting (WB), ELISA, Immunohistochemistry (IHC)

Product Details

Purpose:	TRPC4
Immunogen:	Peptide with sequence C-KHAKEEDSSIDYD, from the internal region (near C Terminus) of the protein sequence according to NP_057263.1, NP_003297.1, NP_001129427.1, NP_001129429.1, NP_001129428.1, NP_001129430.1.
Sequence:	KHAKEEDSSI DYD
Isotype:	IgG
Specificity:	This antibody is expected to recognise all six reported isoforms (NP_057263.1, NP_003297.1, NP_001129427.1, NP_001129429.1, NP_001129428.1, NP_001129430.1).
Cross-Reactivity:	Cow, Dog, Human, Mouse, Pig, Rat
Purification:	Purified from goat serum by ammonium sulphate precipitation followed by antigen affinity

Product Details

chromatography using the immunizing peptide.

Grade: Verified

Target Details

Target: TRPC4

Alternative Name: TRPC4 ([TRPC4 Products](#))

Background: TRPC4, transient receptor potential cation channel, subfamily C, member 4, HTRP4, MGC119570, MGC119571, MGC119572, MGC119573, TRP4, transient receptor potential 4

Gene ID: 7223, 22066, 84494

NCBI Accession: [NP_057263](#), [NP_003297](#), [NP_001129427](#), [NP_001129429](#), [NP_001129428](#), [NP_001129430](#)

Application Details

Application Notes: Immunohistochemistry: Paraffin embedded Human Placenta and Kidney. Recommended concentration: 4.75 µg/mL.
Western Blot: Approx. 110 kDa band observed in Rat Brain lysates (calculated MW of 112 kDa according to Human NP_057263.1 and to Rat NP_536321.1). Recommended concentration: 0.3-1 µg/mL. Primary incubation was 1 hour. This antibody has been successfully used for Peptide ELISA: antibody detection limit dilution 1:32000.

Restrictions: For Research Use only

Handling

Format: Liquid

Concentration: 0.5 mg/mL

Buffer: Supplied at 0.5 mg/mL in Tris saline, 0.02 % sodium azide, pH 7.3 with 0.5 % bovine serum albumin.

Preservative: Sodium azide

Precaution of Use: This product contains Sodium azide: a POISONOUS AND HAZARDOUS SUBSTANCE which should be handled by trained staff only.

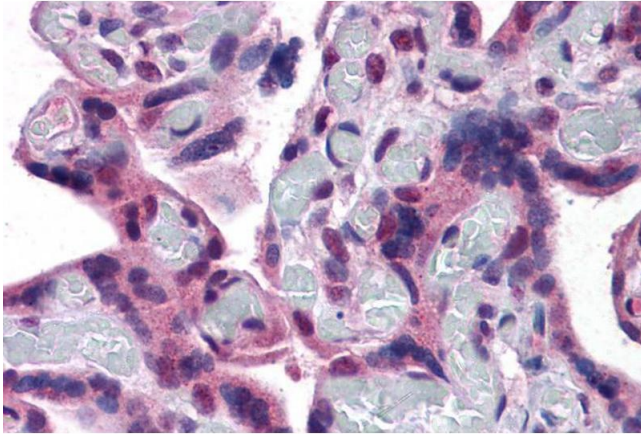
Handling Advice: Minimize freezing and thawing.

Storage: -20 °C

Handling

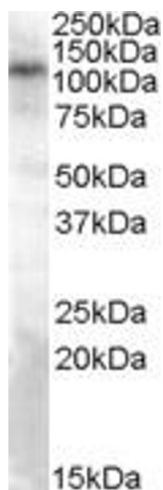
Storage Comment: Aliquot and store at -20°C , with minimal freeze/thawing. A working aliquot may be refrigerated at 4°C for a few weeks and still remain viable.

Images



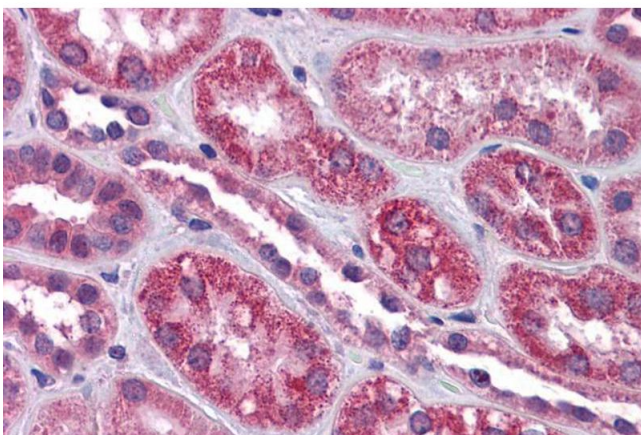
Immunohistochemistry

Image 1. ABIN570934 ($4.75\mu\text{g/ml}$) staining of paraffin embedded Human Placenta. Steamed antigen retrieval with citrate buffer pH 6, AP-staining.



Western Blotting

Image 2. ABIN570934 ($0.3\mu\text{g/ml}$) staining of Rat Brain lysate ($35\mu\text{g}$ protein in RIPA buffer). Detected by chemiluminescence.



Immunohistochemistry

Image 3. ABIN570934 ($4.75\mu\text{g/ml}$) staining of paraffin embedded Human Kidney. Steamed antigen retrieval with citrate buffer pH 6, AP-staining.