

Datasheet for ABIN570935
anti-SFRP1 antibody (C-Term)



[Go to Product page](#)

1 Image

Overview

| | |
|----------------------|--------------------------------------|
| Quantity: | 100 µg |
| Target: | SFRP1 |
| Binding Specificity: | C-Term |
| Reactivity: | Human |
| Host: | Goat |
| Clonality: | Polyclonal |
| Conjugate: | This SFRP1 antibody is un-conjugated |
| Application: | Immunohistochemistry (IHC), ELISA |

Product Details

| | |
|-------------------|---|
| Purpose: | SFRP1 |
| Immunogen: | KNHECPTFQSVFK |
| Sequence: | KNHECPTFQS VFK |
| Isotype: | IgG |
| Cross-Reactivity: | Cow, Human, Mouse |
| Purification: | Purified from goat serum by ammonium sulphate precipitation followed by antigen affinity chromatography using the immunizing peptide. |
| Grade: | Verified |

Target Details

| | |
|-------------------|---|
| Target: | SFRP1 |
| Alternative Name: | SFRP1 (SFRP1 Products) |
| Background: | SFRP1, secreted frizzled-related protein 1, FRP, FRP-1, FRP1, FrzA, SARP2, secreted apoptosis-related protein 2 |
| Gene ID: | 6422 |
| NCBI Accession: | NP_003003 |
| Pathways: | WNT Signaling , Intracellular Steroid Hormone Receptor Signaling Pathway , Negative Regulation of Hormone Secretion , Regulation of Intracellular Steroid Hormone Receptor Signaling , Stem Cell Maintenance , Tube Formation , Positive Regulation of fat Cell Differentiation |

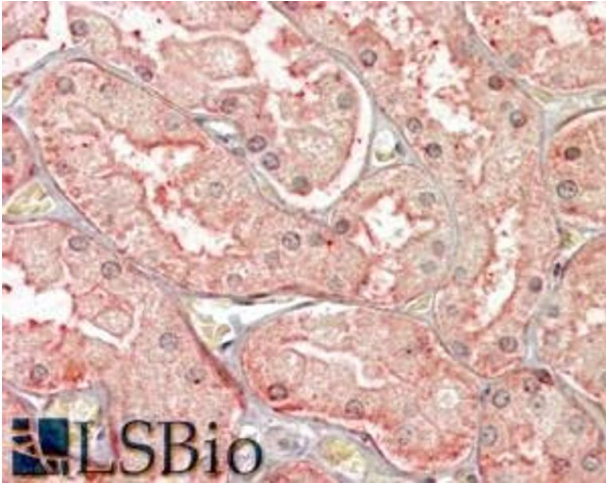
Application Details

| | |
|--------------------|--|
| Application Notes: | Immunohistochemistry: In paraffin embedded Human Kidney shows vesicular staining in epithelial cells of PCT. Recommended concentration, 3-6 µg/mL. Peptide ELISA: antibody detection limit dilution 1:1000. |
|--------------------|--|

| | |
|---------------|-----------------------|
| Restrictions: | For Research Use only |
|---------------|-----------------------|

Handling

| | |
|--------------------|--|
| Format: | Liquid |
| Concentration: | 0.5 mg/mL |
| Buffer: | Supplied at 0.5 mg/mL in Tris saline, 0.02 % sodium azide, pH 7.3 with 0.5 % bovine serum albumin. |
| Preservative: | Sodium azide |
| Precaution of Use: | This product contains Sodium azide: a POISONOUS AND HAZARDOUS SUBSTANCE which should be handled by trained staff only. |
| Handling Advice: | Minimize freezing and thawing. |
| Storage: | -20 °C |
| Storage Comment: | Aliquot and store at -20°C, with minimal freeze/thawing. A working aliquot may be refrigerated at 4°C for a few weeks and still remain viable. |



Immunohistochemistry

Image 1. ABIN570935 (3.8µg/ml) staining of paraffin embedded Human Kidney. Steamed antigen retrieval with citrate buffer pH 6, AP-staining.