



[Go to Product page](#)

Datasheet for ABIN5709369

CPT1C Protein (AA 114-333, partial) (His-SUMO Tag)

1 Image

Overview

Quantity:	100 µg
Target:	CPT1C
Protein Characteristics:	AA 114-333, partial
Origin:	Green Monkey
Source:	Escherichia coli (E. coli)
Protein Type:	Recombinant
Purification tag / Conjugate:	This CPT1C protein is labelled with His-SUMO Tag.
Application:	SDS-PAGE (SDS)

Product Details

Sequence:	APRSVDWREK GYVTPVKNQG QCGSCWAFSA TGALEGQMFR KTGKLVSLSE QNLVDCSGPQ GNEGCNGGLM DYAFQYVADN GGLDSEESYP YEATEESCKY NPEYSVANDT GFVDIPKQEK ALMKAVATVG PISVAIDAGH ESFMFYKEGI YFEPDCSSED MDHGVLVVG Y GFESTESDNS KYWLKNSWG EEWGMGGYIK MAKDRRNHCG IASAASYPTV
Purification:	SDS-PAGE
Purity:	> 90 %

Target Details

Target:	CPT1C
Alternative Name:	CATL1 (CPT1C Products)
Background:	Important for the overall degradation of proteins in lysosomes.

Target Details

Molecular Weight:	40.06 kDa
UniProt:	Q9GKL8
Pathways:	AMPK Signaling , Monocarboxylic Acid Catabolic Process

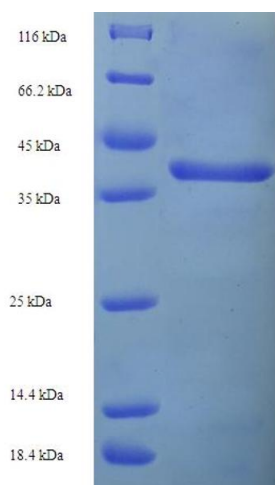
Application Details

Application Notes:	Optimal working dilution should be determined by the investigator.
Restrictions:	For Research Use only

Handling

Format:	Liquid
Concentration:	0.1-2 mg/mL
Buffer:	20 mM Tris-HCl based buffer, pH 8.0
Storage:	-80 °C, 4 °C, -20 °C
Storage Comment:	Store at -20°C, for extended storage, conserve at -20°C or -80°C. Repeated freezing and thawing is not recommended. Store working aliquots at 4°C for up to one week.

Images



SDS-PAGE

Image 1.