

Datasheet for ABIN5709371

Cathepsin S Protein (CTSS) (AA 123-340) (His tag)[Go to Product page](#)**1** Image

Overview

Quantity:	100 µg
Target:	Cathepsin S (CTSS)
Protein Characteristics:	AA 123-340
Origin:	Mouse
Source:	Escherichia coli (E. coli)
Protein Type:	Recombinant
Purification tag / Conjugate:	This Cathepsin S protein is labelled with His tag.
Application:	SDS-PAGE (SDS)

Product Details

Sequence:	LPDVTVDWREK GCVTEVKYQG SCGACWAFSA VGALEGQLKL KTGKLI ¹ LSA QNLVDCSNEE KYGNKGC ² GGG YMTEAFQYII DNGGIEADAS YPYKATDEKC HYN ³ SKNRAAT CSRYIQLPFG DEDALKEAVA TKGPVSVGID ASHSSFFFYK SGVYDDPSCT GNVNHGVLV ⁴ V GYGTLDGKDY WLVKNSWGLN FGDQGYIRMA RNNKNHCGIA SYCSYPEI
Purification:	SDS-PAGE
Purity:	> 90 %

Target Details

Target:	Cathepsin S (CTSS)
Alternative Name:	CATS (CTSS Products)
Background:	Thiol protease. Key protease responsible for the roval of the invariant chain from MHC class II

Target Details

molecules. The bond-specificity of this proteinase is in part similar to the specificities of cathepsin L and cathepsin N.

Molecular Weight: 27.8 kDa

UniProt: [O70370](#)

Pathways: [Activation of Innate immune Response, Toll-Like Receptors Cascades](#)

Application Details

Application Notes: Optimal working dilution should be determined by the investigator.

Restrictions: For Research Use only

Handling

Format: Liquid

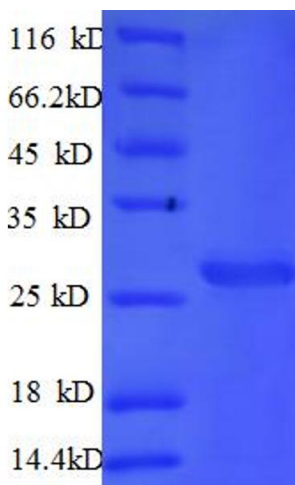
Concentration: 0.1-2 mg/mL

Buffer: 20 mM Tris-HCl based buffer, pH 8.0

Storage: -80 °C, 4 °C, -20 °C

Storage Comment: Store at -20°C, for extended storage, conserve at -20°C or -80°C. Repeated freezing and thawing is not recommended. Store working aliquots at 4°C for up to one week.

Images



SDS-PAGE

Image 1.