

Datasheet for ABIN570940

anti-Septin 6 antibody (Internal Region)**4** Images[Go to Product page](#)

Overview

Quantity:	100 µg
Target:	Septin 6 (SEPT6)
Binding Specificity:	Internal Region
Reactivity:	Human
Host:	Goat
Clonality:	Polyclonal
Conjugate:	This Septin 6 antibody is un-conjugated
Application:	Western Blotting (WB), ELISA, Immunohistochemistry (IHC)

Product Details

Purpose:	SEPT6
Immunogen:	Peptide with sequence C-DEVNAFKQRKTA, from the internal region of the protein sequence according to NP_665798.1, NP_055944.2, NP_665801.1.
Sequence:	DEVNAFKQRK TA
Isotype:	IgG
Specificity:	This antibody is expected to recognize the reported isoforms NP_665798.1, NP_055944.2 and NP_665801.1. Reported variants NP_665799.1 and NP_665798.1 represent identical protein.
Cross-Reactivity:	Cow, Dog, Human
Purification:	Purified from goat serum by ammonium sulphate precipitation followed by antigen affinity chromatography using the immunizing peptide.

Product Details

Grade: Verified

Target Details

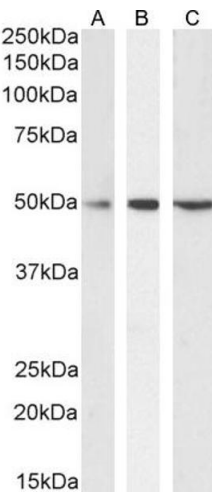
Target:	Septin 6 (SEPT6)
Alternative Name:	SEPTIN6 (SEPT6 Products)
Background:	SEPT6, septin 6, KIAA0128, MGC16619, MGC20339, SEP2, SEPT2, septin 2
Gene ID:	23157
NCBI Accession:	NP_665798 , NP_055944 , NP_665801

Application Details

Application Notes:	<p>Immunohistochemistry: In paraffin embedded Human Tonsil shows specific staining in dividing cells just outside a germinal centre. Recommended concentration, 3-5 µg/mL.</p> <p>Western Blot: Approx 50 kDa band observed in Human Testis, Duodenum, Kidney and Tonsil lysates, and in lysates of cell lines Daudi, Jurkat and MOLT4 (calculated MW of 49.7 kDa according to NP_055944.2). Recommended concentration: 0.1-1 µg/mL. Primary incubation: 1h at 4°C.</p> <p>Peptide ELISA: antibody detection limit dilution 1:4000.</p>
Restrictions:	For Research Use only

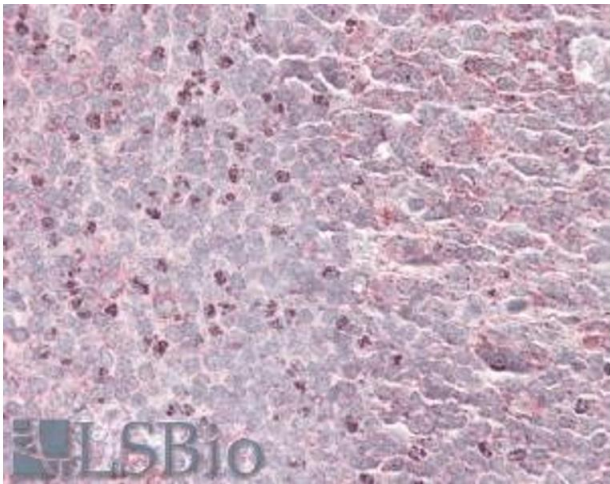
Handling

Format:	Liquid
Concentration:	0.5 mg/mL
Buffer:	Supplied at 0.5 mg/mL in Tris saline, 0.02 % sodium azide, pH 7.3 with 0.5 % bovine serum albumin.
Preservative:	Sodium azide
Precaution of Use:	This product contains Sodium azide: a POISONOUS AND HAZARDOUS SUBSTANCE which should be handled by trained staff only.
Handling Advice:	Minimize freezing and thawing.
Storage:	-20 °C
Storage Comment:	Aliquot and store at -20°C, with minimal freeze/thawing. A working aliquot may be refrigerated at 4°C for a few weeks and still remain viable.



Western Blotting

Image 1. (ABIN570940) (0.1 µg/mL) staining of Daudi (A), Jurkat (B) and MOLT4 (C) cell lysate (35 µg protein in RIPA buffer). Detected by chemiluminescence.



Immunohistochemistry

Image 2. ABIN570940 (3.8µg/ml) staining of paraffin embedded Human Tonsil. Steamed antigen retrieval with citrate buffer pH 6, AP-staining.



Western Blotting

Image 3. ABIN570940 (1µg/ml) staining of Human Testis lysate (35µg protein in RIPA buffer). Primary incubation was 1 hour. Detected by chemiluminescence.

Please check the [product details page](#) for more images. Overall 4 images are available for ABIN570940.