



[Go to Product page](#)

Datasheet for ABIN5709463

## ELANE Protein (AA 30-267) (GST tag)

### 1 Image

#### Overview

Quantity:	100 µg
Target:	ELANE
Protein Characteristics:	AA 30-267
Origin:	Human
Source:	Escherichia coli (E. coli)
Protein Type:	Recombinant
Purification tag / Conjugate:	This ELANE protein is labelled with GST tag.
Application:	SDS-PAGE (SDS)

#### Product Details

Sequence:	IVGRRARPH AWPFMVSLQL RGGHFCGATL IAPNFVMSAA HCVANVNVRA VRVVLGAHNL SRREPTRQVF AVQRIFENGY DPVNLLNDIV ILQLNGSATI NANVQVAQLP AQRRRLGNGV QCLAMGWLL GRNRGIASVL QELNVTVVTLS LCRRSNVCTL VRGRQAGVCF GDSGSPLVCN GLIHGIASFV RGGCASGLYP DAFAPVAQFV NWIDSIIQRS EDNPCPHPRD PDPASRTH
Purification:	SDS-PAGE
Purity:	> 90 %

#### Target Details

Target:	ELANE
Alternative Name:	ELNE ( <a href="#">ELANE Products</a> )
Background:	Modifies the functions of natural killer cells, monocytes and granulocytes. Inhibits C5a-

## Target Details

dependent neutrophil enzyme release and chotaxis.

Molecular Weight: 52.9 kDa

UniProt: [P08246](#)

## Application Details

Application Notes: Optimal working dilution should be determined by the investigator.

Restrictions: For Research Use only

## Handling

Format: Liquid

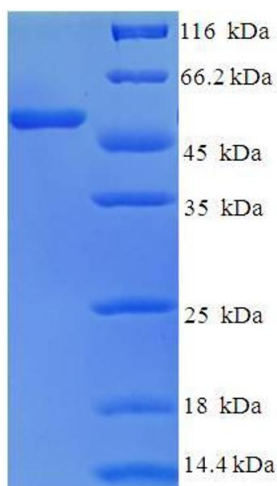
Concentration: 0.1-2 mg/mL

Buffer: 20 mM Tris-HCl based buffer, pH 8.0

Storage: -80 °C,4 °C,-20 °C

Storage Comment: Store at -20°C, for extended storage, conserve at -20°C or -80°C. Repeated freezing and thawing is not recommended. Store working aliquots at 4°C for up to one week.

## Images



### SDS-PAGE

Image 1.