

Datasheet for ABIN570947
anti-WIZ antibody (Internal Region)



[Go to Product page](#)

2 Images

Overview

Quantity:	100 µg
Target:	WIZ (ZNF803)
Binding Specificity:	Internal Region
Reactivity:	Human
Host:	Goat
Clonality:	Polyclonal
Application:	Western Blotting (WB), ELISA, Flow Cytometry (FACS)

Product Details

Purpose:	WIZ
Immunogen:	C-RSYIQGGRPFTKKFR
Sequence:	RSYIQGGRPF TTKFR
Isotype:	IgG
Cross-Reactivity:	Human, Mouse, Rat
Purification:	Purified from goat serum by ammonium sulphate precipitation followed by antigen affinity chromatography using the immunizing peptide.
Grade:	Verified

Target Details

Target:	WIZ (ZNF803)
---------	--------------

Target Details

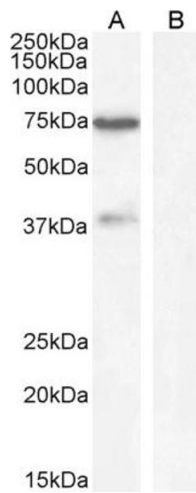
Alternative Name:	WIZ (ZNF803 Products)
Background:	WIZ, widely interspaced zinc finger motifs, ZNF803, WIZ zinc finger, widely-interspaced zinc finger motifs
Gene ID:	58525, 22404, 314598
NCBI Accession:	NP_067064 , NP_001317324

Application Details

Application Notes:	Western Blot: Approx 75 kDa band observed in Human Brain (Cerebellum) lysates (calculated MW of 85.4 kDa according to NP_067064.2). An additional band of unknown identity was also consistently observed at 38 kDa. This band was successfully blocked by incubation with the peptide. Peptide ELISA: antibody detection limit dilution 1:2000.
Comment:	Flow Cytometry: Flow cytometric analysis of HeLa cells. Recommended concentration: 10ug/ml.
Restrictions:	For Research Use only

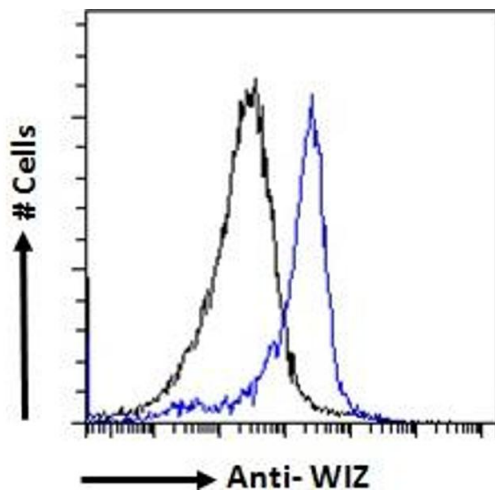
Handling

Format:	Liquid
Concentration:	0.5 mg/mL
Buffer:	Supplied at 0.5 mg/mL in Tris saline, 0.02 % sodium azide, pH 7.3 with 0.5 % bovine serum albumin.
Preservative:	Sodium azide
Precaution of Use:	This product contains Sodium azide: a POISONOUS AND HAZARDOUS SUBSTANCE which should be handled by trained staff only.
Handling Advice:	Minimize freezing and thawing.
Storage:	-20 °C
Storage Comment:	Aliquot and store at -20°C, with minimal freeze/thawing. A working aliquot may be refrigerated at 4°C for a few weeks and still remain viable.



Western Blotting

Image 1. ABIN570947 (1µg/ml) staining of Human Cerebellum lysate (A) + Blocking peptide (B) (35µg protein in RIPA buffer). Detected by chemiluminescence.



Flow Cytometry

Image 2. ABIN570947 Flow cytometric analysis of paraformaldehyde fixed HeLa cells (blue line), permeabilized with 0.5% Triton. Primary incubation 1hr (10ug/ml) followed by Alexa Fluor 488 secondary antibody (1ug/ml). IgG control: Unimmunized goat IgG (black line) fol