

Datasheet for ABIN5709481

## Epiplakin 1 Protein (EPPK1) (AA 1-225, partial) (His tag)



[Go to Product page](#)

### 1 Image

#### Overview

Quantity:	100 µg
Target:	Epiplakin 1 (EPPK1)
Protein Characteristics:	AA 1-225, partial
Origin:	Human
Source:	Escherichia coli (E. coli)
Protein Type:	Recombinant
Purification tag / Conjugate:	This Epiplakin 1 protein is labelled with His tag.
Application:	SDS-PAGE (SDS)

#### Product Details

Sequence:	MSGHTLPPLP VPGTNSTEQ A SVPRAMAATL GAGTPPRPQA RSIAGVYVEA SGQAQSVYAA MEQGLLPAGL GQALLEAQAA TGGLVDLARG QLLPVSKALQ QGLVGLELKE KLLAAERATT GYDPYGG EK LALFQAIGKE VVDRALGQSW LEVQLATGGL VDPAQGV LVA PEPACHQGLL DRETWHKLSE LEPGTGDLRF LNPNTLERLT YHQLLERCVR APGSG
Purification:	SDS-PAGE
Purity:	> 90 %

#### Target Details

Target:	Epiplakin 1 (EPPK1)
Alternative Name:	EPIPL ( <a href="#">EPPK1 Products</a> )
Molecular Weight:	27.6 kDa

## Target Details

---

UniProt: [P58107](#)

## Application Details

---

Application Notes: Optimal working dilution should be determined by the investigator.

Restrictions: For Research Use only

## Handling

---

Format: Liquid

Concentration: 0.1-2 mg/mL

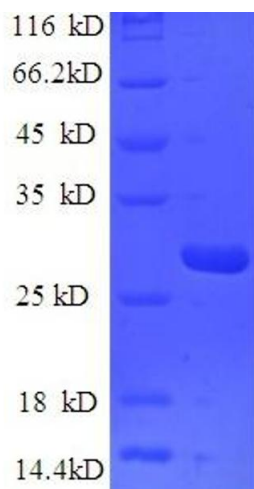
Buffer: 20 mM Tris-HCl based buffer, pH 8.0

Storage: -80 °C, 4 °C, -20 °C

Storage Comment: Store at -20°C, for extended storage, conserve at -20°C or -80°C. Repeated freezing and thawing is not recommended. Store working aliquots at 4°C for up to one week.

## Images

---



### SDS-PAGE

Image 1.