



Datasheet for ABIN5709507

FCER2 Protein (AA 48-321) (His-SUMO Tag)



[Go to Product page](#)

1 Image

Overview

Quantity:	100 µg
Target:	FCER2
Protein Characteristics:	AA 48-321
Origin:	Human
Source:	Escherichia coli (E. coli)
Protein Type:	Recombinant
Purification tag / Conjugate:	This FCER2 protein is labelled with His-SUMO Tag.
Application:	SDS-PAGE (SDS)

Product Details

Sequence:	DTTQSLKQLE ERAARNVSQV SKNLESHHGD QMAQKSQSTQ ISQEELELRA EQQLKSQDL ELSWNLNGLQ ADLSSFKSQE LNERNEASDL LERLREEVTK LRMELQVSSG FVCNTCPEKW INFQRKCYFF GKGTKQWVHA RYACDDMEGQ LVSIHSPPEEQ DFLTKHASHT GSWIGLRNLD LKGEFIWVDG SHVDYSNWAP GEPTSRSQGE DCVMMRGSGR WNDAFCDRKL GAWVCDRLAT CTPPASEGSA ESMGPDSRPD PDGRLPTPSA PLHS
Purification:	SDS-PAGE
Purity:	> 90 %

Target Details

Target:	FCER2
Alternative Name:	FCER2 (FCER2 Products)

Target Details

Background:	Low-affinity receptor for immunoglobulin E (IgE) and CR2/CD21. Has essential roles in the regulation of IgE production and in the differentiation of B-cells (it is a B-cell-specific antigen).
Molecular Weight:	47 kDa
UniProt:	P06734
Pathways:	Regulation of Leukocyte Mediated Immunity , Positive Regulation of Immune Effector Process

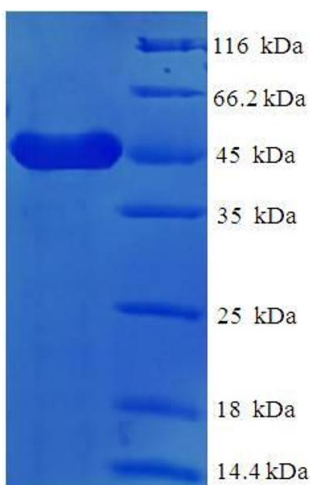
Application Details

Application Notes:	Optimal working dilution should be determined by the investigator.
Restrictions:	For Research Use only

Handling

Format:	Liquid
Concentration:	0.1-2 mg/mL
Buffer:	20 mM Tris-HCl based buffer, pH 8.0
Storage:	-80 °C, 4 °C, -20 °C
Storage Comment:	Store at -20°C, for extended storage, conserve at -20°C or -80°C. Repeated freezing and thawing is not recommended. Store working aliquots at 4°C for up to one week.

Images



SDS-PAGE

Image 1.