

Datasheet for ABIN570951
anti-SULF2 antibody (Internal Region)[Go to Product page](#)

1 Image

Overview

Quantity:	100 µg
Target:	SULF2
Binding Specificity:	Internal Region
Reactivity:	Human
Host:	Goat
Clonality:	Polyclonal
Application:	Western Blotting (WB), ELISA

Product Details

Purpose:	SULF2
Immunogen:	Peptide with sequence C-DGRVYHVGLGDAAQPR , from the internal region of the protein sequence according to NP_061325.1, NP_940998.1.
Sequence:	DGRVYHVGLG DAAQPR
Isotype:	IgG
Specificity:	This antibody is expected to recognize both reported isoforms (NP_061325.1, NP_940998.1)
Predicted Reactivity:	Human
Purification:	Purified from goat serum by ammonium sulphate precipitation followed by antigen affinity chromatography using the immunizing peptide.
Grade:	Verified

Target Details

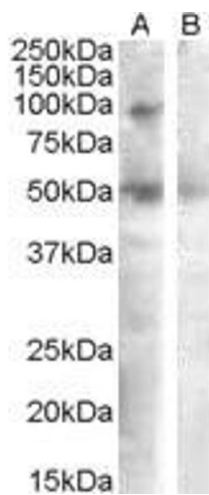
Target:	SULF2
Alternative Name:	SULF2 (SULF2 Products)
Background:	SULF2, sulfatase 2, DKFZp313E091, FLJ90554, HSULF-2, KIAA1247, MGC126411, OTTHUMP00000031223, extracellular sulfatase SULF-2
Gene ID:	55959
NCBI Accession:	NP_061325 , NP_940998

Application Details

Application Notes:	<p>DS WB Results: Approx 90 kDa band observed in Human Ovary lysates (calculated MW of 98.2 kDa according to NP_940998.1). Recommended concentration: 0.3-1 µg/mL. An additional band of 50 kDa was consistently observed, however this band was not blocked by the immunizing peptide and it is therefore a non-specific signal. We call for caution when used for other assays than Western blot.</p> <p>Peptide ELISA: antibody detection limit dilution 1:8000.</p>
Restrictions:	For Research Use only

Handling

Format:	Liquid
Concentration:	0.5 mg/mL
Buffer:	Supplied at 0.5 mg/mL in Tris saline, 0.02 % sodium azide, pH 7.3 with 0.5 % bovine serum albumin.
Preservative:	Sodium azide
Precaution of Use:	This product contains Sodium azide: a POISONOUS AND HAZARDOUS SUBSTANCE which should be handled by trained staff only.
Handling Advice:	Minimize freezing and thawing.
Storage:	-20 °C
Storage Comment:	Aliquot and store at -20°C, with minimal freeze/thawing. A working aliquot may be refrigerated at 4°C for a few weeks and still remain viable.



Western Blotting

Image 1. ABIN570951 (0.3µg/ml) staining of Human Ovary lysate (35µg protein in RIPA buffer) with (B) and without (A) blocking with the immunising peptide. Primary incubation was 1 hour. Detected by chemiluminescence.