

Datasheet for ABIN5709531
Filaggrin Protein (FLG) (AA 3838-4061, partial) (His-SUMO Tag)



[Go to Product page](#)

1 Image

Overview

Quantity:	100 µg
Target:	Filaggrin (FLG)
Protein Characteristics:	AA 3838-4061, partial
Origin:	Human
Source:	Escherichia coli (E. coli)
Protein Type:	Recombinant
Purification tag / Conjugate:	This Filaggrin protein is labelled with His-SUMO Tag.
Application:	SDS-PAGE (SDS)

Product Details

Sequence:	DSSRHSQSGQ GESAGSRRSR RQGSSVSQDS DSEAYPEDSE RRSESASRNH HGSSREQSRD GSRHPGSSHR DTASHVQSSP VQSDSSTAKE HGHFSSLSQD SAYHSGIQSR GSPHSSSSYH YQSEGTERQK GQSGLVWRHG SYGSADYDYG ESGFRHSQHG SVSYNSNPVV FKERSDICKA SAFGKDHPRY YATYINKDPG LCGHSSDISK QLGFSQSQRV YYYE
Purification:	SDS-PAGE
Purity:	> 90 %

Target Details

Target:	Filaggrin (FLG)
Alternative Name:	FILA (FLG Products)
Background:	Aggregates keratin intermediate filaments and promotes disulfide-bond formation among the

Target Details

intermediate filaments during terminal differentiation of mammalian epidermis.

Molecular Weight: 40.7 kDa

UniProt: [P20930](#)

Pathways: [Sensory Perception of Sound, Stem Cell Maintenance](#)

Application Details

Application Notes: Optimal working dilution should be determined by the investigator.

Restrictions: For Research Use only

Handling

Format: Liquid

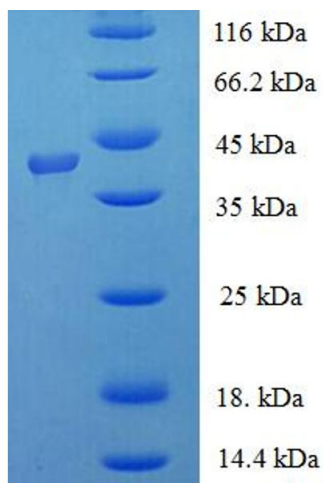
Concentration: 0.1-2 mg/mL

Buffer: 20 mM Tris-HCl based buffer, pH 8.0

Storage: -80 °C, 4 °C, -20 °C

Storage Comment: Store at -20°C, for extended storage, conserve at -20°C or -80°C. Repeated freezing and thawing is not recommended. Store working aliquots at 4°C for up to one week.

Images



SDS-PAGE

Image 1.