

Datasheet for ABIN570957  
**anti-SLC47A1 antibody (Internal Region)**

## 3 Images

[Go to Product page](#)

## Overview

Quantity:	100 µg
Target:	SLC47A1
Binding Specificity:	Internal Region
Reactivity:	Human
Host:	Goat
Clonality:	Polyclonal
Conjugate:	This SLC47A1 antibody is un-conjugated
Application:	Western Blotting (WB), ELISA, Immunofluorescence (IF)

## Product Details

Purpose:	SLC47A1
Immunogen:	Peptide with sequence C-PEHPQDGAKLSRKQ, from the internal region (near C Terminus) of the protein sequence according to NP_060712.2.
Sequence:	PEHPQDGAKL SRKQ
Isotype:	IgG
Cross-Reactivity:	Human
Purification:	Purified from goat serum by ammonium sulphate precipitation followed by antigen affinity chromatography using the immunizing peptide.
Grade:	Verified

## Target Details

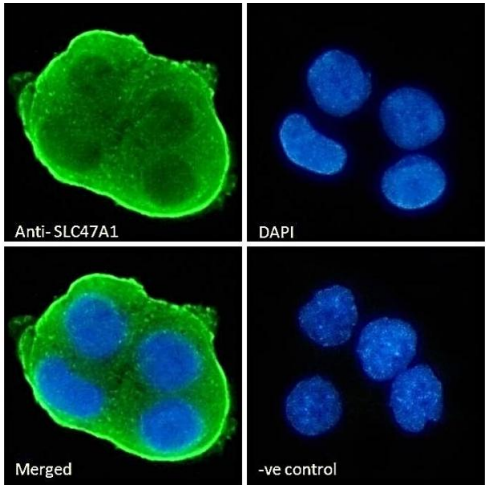
Target:	SLC47A1
Alternative Name:	SLC47A1 ( <a href="#">SLC47A1 Products</a> )
Background:	SLC47A1, solute carrier family 47, member 1, FLJ10847, MATE1, MGC64822, multidrug and toxin extrusion 1
Gene ID:	55244
NCBI Accession:	<a href="#">NP_060712</a>

## Application Details

Application Notes:	Western Blot: Approx. 60-65 kDa band observed in Human Liver lysates (calculated MW of 61.9 kDa according to NP_060712.2). This band was successfully blocked by incubation with the immunizing peptide. Recommended concentration: 0.1-0.3 µg/mL. Primary incubation: 1h at 25°C. Peptide ELISA: antibody detection limit dilution 1:64000.
Comment:	<b>Immunofluorescence:</b> Strong expression of the protein seen in the plasma membrane of HepG2 cells. Recommended concentration: 10µg/ml.
Restrictions:	For Research Use only

## Handling

Format:	Liquid
Concentration:	0.5 mg/mL
Buffer:	Supplied at 0.5 mg/mL in Tris saline, 0.02 % sodium azide, pH 7.3 with 0.5 % bovine serum albumin.
Preservative:	Sodium azide
Precaution of Use:	This product contains Sodium azide: a POISONOUS AND HAZARDOUS SUBSTANCE which should be handled by trained staff only.
Handling Advice:	Minimize freezing and thawing.
Storage:	-20 °C
Storage Comment:	Aliquot and store at -20°C, with minimal freeze/thawing. A working aliquot may be refrigerated at 4°C for a few weeks and still remain viable.



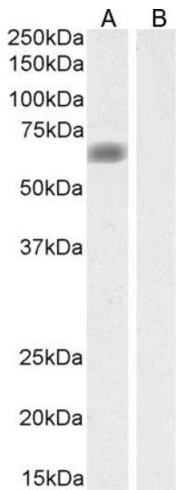
Immunofluorescence

**Image 1.** ABIN570957 Immunofluorescence analysis of paraformaldehyde fixed HepG2 cells, permeabilized with 0.15 % Triton. Primary incubation 1hr (10 µg/mL) followed by Alexa Fluor 488 secondary antibody (2 µg/mL), showing membrane staining. The nuclear stain is DAPI (blue)



Western Blotting

**Image 2.** ABIN570957 (0.1µg/ml) staining of Human Kidney lysate (35µg protein in RIPA buffer). Detected by chemiluminescence.



Western Blotting

**Image 3.** ABIN570957 (0.1 µg/mL) staining of Human Liver lysate (35 µg protein in RIPA buffer). Detected by chemiluminescence.