



[Go to Product page](#)

Datasheet for ABIN5709575

## GGPS1 Protein (AA 1-300, full length) (His-SUMO Tag)

### 1 Image

#### Overview

Quantity:	100 µg
Target:	GGPS1
Protein Characteristics:	full length, AA 1-300
Origin:	Human
Source:	Escherichia coli (E. coli)
Protein Type:	Recombinant
Purification tag / Conjugate:	This GGPS1 protein is labelled with His-SUMO Tag.
Application:	SDS-PAGE (SDS)

#### Product Details

Sequence:	MEKTQETVQR ILLEPYKYLL QLPGKQVRTK LSQAFNHWLK VPEDKLQIII EVTEMLHNAS LLIDDIEDNS KLRRGFPVAH SIYGIPSVIN SANYVYFLGL EKVLTDHPD AVKLFTRQLL ELHQGQGLDI YWRDNYTCPT EEEYKAMVLQ KTGGLFGLAV GLMQLFSDYK EDLKPLLNTL GLFFQIRDDY ANLHSKEYSE NKSFCEDLTE GKFSFPTIHA IWSRPESTQV QNILRQRTE IDIKKYCVHY LEDVGSFEYT RNTLKELEAK AYKQIDARGG NPELVALVKH LSKMFKEENE
Purification:	SDS-PAGE
Purity:	> 90 %

#### Target Details

Target:	GGPS1
Alternative Name:	GGPPS ( <a href="#">GGPS1 Products</a> )

## Target Details

Background:	Catalyzes the trans-addition of the three molecules of IPP onto DMAPP to form geranylgeranyl pyrophosphate, an important precursor of carotenoids and geranylated proteins.
Molecular Weight:	50.85 kDa
UniProt:	<a href="#">O95749</a>

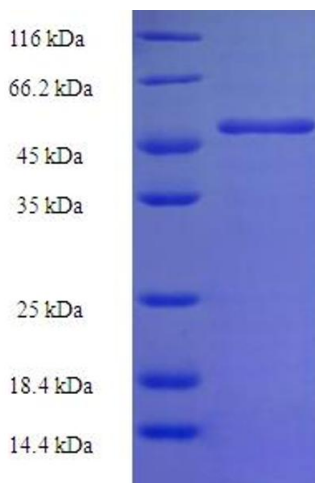
## Application Details

Application Notes:	Optimal working dilution should be determined by the investigator.
Restrictions:	For Research Use only

## Handling

Format:	Liquid
Concentration:	0.1-2 mg/mL
Buffer:	20 mM Tris-HCl based buffer, pH 8.0
Storage:	-80 °C, 4 °C, -20 °C
Storage Comment:	Store at -20°C, for extended storage, conserve at -20°C or -80°C. Repeated freezing and thawing is not recommended. Store working aliquots at 4°C for up to one week.

## Images



### SDS-PAGE

Image 1.