

Datasheet for ABIN570959  
**anti-RBM3 antibody (C-Term)**[Go to Product page](#)

## 1 Image

## Overview

Quantity:	100 µg
Target:	RBM3
Binding Specificity:	C-Term
Reactivity:	Human
Host:	Goat
Clonality:	Polyclonal
Conjugate:	This RBM3 antibody is un-conjugated
Application:	Western Blotting (WB), ELISA

## Product Details

Purpose:	RBM3
Immunogen:	Peptide with sequence C-DRYSGGNYRDNYDN, from the C Terminus of the protein sequence according to NP_006734.1.
Sequence:	DRYSGGNYRD NYDN
Isotype:	IgG
Cross-Reactivity:	Dog, Human, Mouse, Rat
Purification:	Purified from goat serum by ammonium sulphate precipitation followed by antigen affinity chromatography using the immunizing peptide.
Grade:	Verified

## Target Details

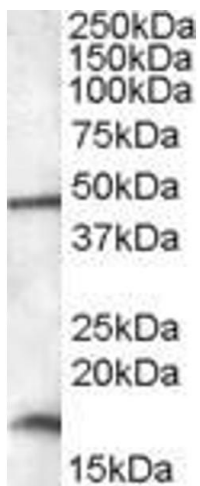
Target:	RBM3
Alternative Name:	RBM3 ( <a href="#">RBM3 Products</a> )
Background:	RBM3, RNA binding motif (RNP1, RRM) protein 3, IS1-RNPL, RNPL, OTTHUMP00000025800, OTTHUMP00000025802, RNA binding motif protein 3
Gene ID:	5935, 19652, 114488
NCBI Accession:	<a href="#">NP_006734</a>

## Application Details

Application Notes:	Western Blot: Approx.17 kDa band observed in lysates of cell line HepG2 (calculated MW of 17.2 kDa according to NP_006734.1). Recommended concentration: 0.01-0.03 µg/mL. An additional band of unknown identity was also consistently observed at 48 kDa. This band Peptide ELISA: antibody detection limit dilution 1:2000.
Restrictions:	For Research Use only

## Handling

Format:	Liquid
Concentration:	0.5 mg/mL
Buffer:	Supplied at 0.5 mg/mL in Tris saline, 0.02 % sodium azide, pH 7.3 with 0.5 % bovine serum albumin.
Preservative:	Sodium azide
Precaution of Use:	This product contains Sodium azide: a POISONOUS AND HAZARDOUS SUBSTANCE which should be handled by trained staff only.
Handling Advice:	Minimize freezing and thawing.
Storage:	-20 °C
Storage Comment:	Aliquot and store at -20°C, with minimal freeze/thawing. A working aliquot may be refrigerated at 4°C for a few weeks and still remain viable.



#### Western Blotting

**Image 1.** ABIN570959 (0.01µg/ml) staining of HepG2 lysate (35µg protein in RIPA buffer). Primary incubation was 1 hour. Detected by chemiluminescence.