

Datasheet for ABIN5709591

GLT8D2 Protein (AA 25-349) (His tag)[Go to Product page](#)**1** Image

Overview

| | |
|-------------------------------|---|
| Quantity: | 100 µg |
| Target: | GLT8D2 |
| Protein Characteristics: | AA 25-349 |
| Origin: | Human |
| Source: | Escherichia coli (E. coli) |
| Protein Type: | Recombinant |
| Purification tag / Conjugate: | This GLT8D2 protein is labelled with His tag. |
| Application: | SDS-PAGE (SDS) |

Product Details

| | |
|---------------|---|
| Sequence: | <p>KKVHKGTVPK NDADDESETP EELEEEIPVV ICAAAGRMGA TMAAINSIYS NTDANILFYV VGLRNTLTRI RKWIEHSLR EINFKIVEFN PMVLK GKIRP DSSRPELLQP LNFVRFYLPL LIHQHEKVIY LDDDVIVQGD IQELYDTTLA LGHAAAFSDD CDLPSAQDIN RLVGLQNTYM GYLDYRKKAI KDLGISPSTC SFNPGVIVAN MTEWKHQIRIT KQLEKWMQKN VEENLYSSSL GGGVATSPML IVFHGKYSTI NPLWHIRHLG WNPDARYSEH FLQEAKLLHW NGRHKPWDFP SVHNDLWESW FVPDPAGIFK LNHHS</p> |
| Purification: | SDS-PAGE |
| Purity: | > 90 % |

Target Details

| | |
|---------|--------|
| Target: | GLT8D2 |
|---------|--------|

Target Details

Alternative Name: GL8D2 ([GLT8D2 Products](#))

Molecular Weight: 41.3 kDa

UniProt: [Q9H1C3](#)

Application Details

Application Notes: Optimal working dilution should be determined by the investigator.

Restrictions: For Research Use only

Handling

Format: Liquid

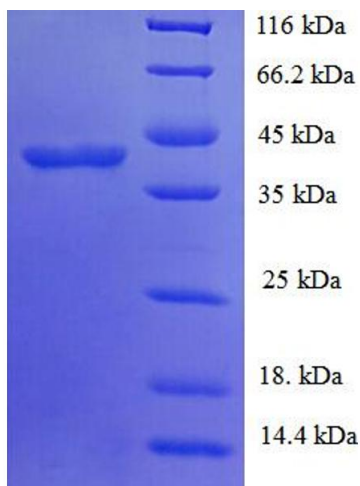
Concentration: 0.1-2 mg/mL

Buffer: 20 mM Tris-HCl based buffer, pH 8.0

Storage: -80 °C, 4 °C, -20 °C

Storage Comment: Store at -20°C, for extended storage, conserve at -20°C or -80°C. Repeated freezing and thawing is not recommended. Store working aliquots at 4°C for up to one week.

Images



SDS-PAGE

Image 1.