



[Go to Product page](#)

Datasheet for ABIN570961

anti-TJP1 antibody (Internal Region)

6 Images

Overview

Quantity:	100 µg
Target:	TJP1
Binding Specificity:	Internal Region
Reactivity:	Human
Host:	Goat
Clonality:	Polyclonal
Conjugate:	This TJP1 antibody is un-conjugated
Application:	ELISA, Immunofluorescence (IF)

Product Details

Purpose:	ZO-1
Immunogen:	C-PKPTSQNFSEHDKT
Sequence:	PKPTSQNFSEHDKT
Isotype:	IgG
Specificity:	This antibody is expected to recognize both reported isoforms (NP_003248.3, NP_783297.2)
Cross-Reactivity:	Human
Purification:	Purified from goat serum by ammonium sulphate precipitation followed by antigen affinity chromatography using the immunizing peptide.
Grade:	Verified

Target Details

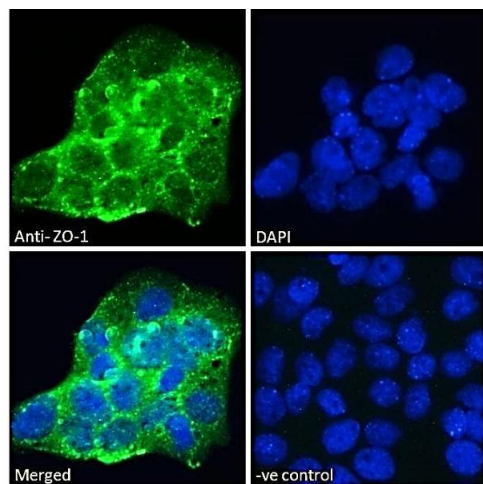
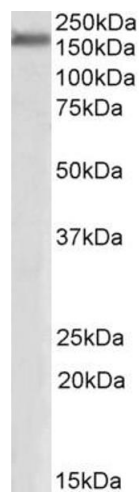
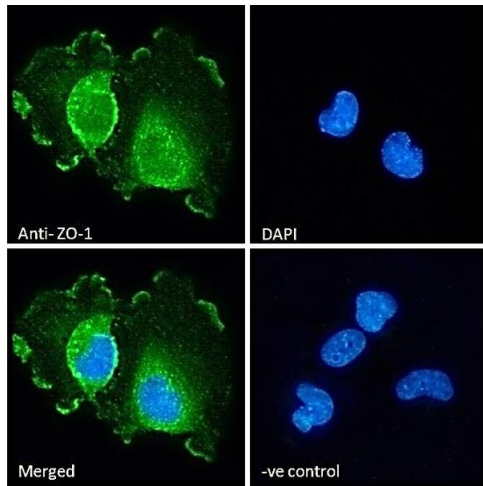
Target:	TJP1
Alternative Name:	TJP1 (TJP1 Products)
Background:	TJP1, tight junction protein 1 (zona occludens 1), DKFZp686M05161, MGC133289, ZO-1, OTTHUMP00000174520, tight junction protein 1, tight junction protein ZO-1, zona occludens 1, zonula occludens 1 protein
Gene ID:	7082
NCBI Accession:	NP_003248 , NP_783297
Pathways:	Carbohydrate Homeostasis , Cell-Cell Junction Organization

Application Details

Application Notes:	Peptide ELISA: antibody detection limit dilution 1:8000.
Comment:	Immunofluorescence: Strong expression of the protein seen in the cellular junction of A431 cells, and in the plasma membrane and cytoplasm of U251 cells. Recommended concentration: 10µg/ml.
Restrictions:	For Research Use only

Handling

Format:	Liquid
Concentration:	0.5 mg/mL
Buffer:	Supplied at 0.5 mg/mL in Tris saline, 0.02 % sodium azide, pH 7.3 with 0.5 % bovine serum albumin.
Preservative:	Sodium azide
Precaution of Use:	This product contains Sodium azide: a POISONOUS AND HAZARDOUS SUBSTANCE which should be handled by trained staff only.
Handling Advice:	Minimize freezing and thawing.
Storage:	-20 °C
Storage Comment:	Aliquot and store at -20°C, with minimal freeze/thawing. A working aliquot may be refrigerated at 4°C for a few weeks and still remain viable.



Immunofluorescence

Image 1. (ABIN570961) Immunofluorescence analysis of paraformaldehyde fixed U251 cells, permeabilized with 0.15 % Triton. Primary incubation 1hr (10 µg/mL) followed by Alexa Fluor 488 secondary antibody (2 µg/mL), showing plasma membrane and cytoplasmic staining. The nuclear stain is DAPI (blue). Negative control: Unimmunized goat IgG (10 µg/mL) followed by Alexa Fluor 488 secondary antibody (2 µg/mL).

Western Blotting

Image 2. ABIN570961 (0.3µg/ml) staining of Human Cerebral Cortex lysate (35µg protein in RIPA buffer). Detected by chemiluminescence.

Immunofluorescence

Image 3. ABIN570961 Immunofluorescence analysis of paraformaldehyde fixed A431 cells, permeabilized with 0.15% Triton. Primary incubation 1hr (10ug/ml) followed by Alexa Fluor 488 secondary antibody (2ug/ml), showing cell junction staining. The nuclear stain is DAPI

Please check the [product details page](#) for more images. Overall 6 images are available for ABIN570961.