

Datasheet for ABIN570963
anti-CLEC16A antibody (AA 1040-53)[Go to Product page](#)

1 Image

Overview

Quantity:	100 µg
Target:	CLEC16A
Binding Specificity:	AA 1040-53
Reactivity:	Human
Host:	Goat
Clonality:	Polyclonal
Conjugate:	This CLEC16A antibody is un-conjugated
Application:	ELISA, Western Blotting (WB)

Product Details

Purpose:	CLEC16A (aa1040-53)
Immunogen:	Peptide with sequence EEAACAEPVGTAED, from the C Terminus of the protein sequence according to NP_056041.1.
Sequence:	EEAACAEPVG TAED
Isotype:	IgG
Cross-Reactivity:	Human
Purification:	Purified from goat serum by ammonium sulphate precipitation followed by antigen affinity chromatography using the immunizing peptide.
Grade:	Verified

Target Details

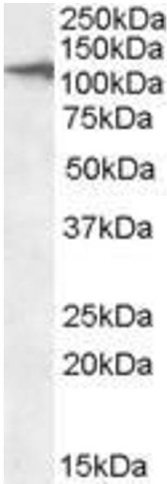
Target:	CLEC16A
Alternative Name:	CLEC16A (CLEC16A Products)
Background:	CLEC16A, C-type lectin domain family 16, member A, Gop-1, KIAA0350, MGC111457
Gene ID:	23274
NCBI Accession:	NP_056041

Application Details

Application Notes:	Western Blot: Approx. 110 kDa band observed in Human Kidney and Liver lysates (calculated MW of 118 kDa according to NP_056041.1). Recommended concentration: 1-3 µg/mL. Peptide ELISA: antibody detection limit dilution 1:1000.
Restrictions:	For Research Use only

Handling

Format:	Liquid
Concentration:	0.5 mg/mL
Buffer:	Supplied at 0.5 mg/mL in Tris saline, 0.02 % sodium azide, pH 7.3 with 0.5 % bovine serum albumin.
Preservative:	Sodium azide
Precaution of Use:	This product contains Sodium azide: a POISONOUS AND HAZARDOUS SUBSTANCE which should be handled by trained staff only.
Handling Advice:	Minimize freezing and thawing.
Storage:	-20 °C
Storage Comment:	Aliquot and store at -20°C, with minimal freeze/thawing. A working aliquot may be refrigerated at 4°C for a few weeks and still remain viable.



Western Blotting

Image 1. ABIN570963 (2µg/ml) staining of Human Liver lysate (35µg protein in RIPA buffer). Primary incubation was 1 hour. Detected by chemiluminescence.