

Datasheet for ABIN5709635
RAB3IL1 Protein (AA 21-247) (His tag)



[Go to Product page](#)

1 Image

Overview

Quantity:	100 µg
Target:	RAB3IL1
Protein Characteristics:	AA 21-247
Origin:	Human
Source:	Escherichia coli (E. coli)
Protein Type:	Recombinant
Purification tag / Conjugate:	This RAB3IL1 protein is labelled with His tag.
Application:	SDS-PAGE (SDS)

Product Details

Sequence:	IIGGHEAKPH SRPYMAYLMI WDQKSLKRCG GFLIRDDFVL TAAHCWGSSI NVTLGAHNIK EQEPTQQFIP VKRPIHPAY NPKNFSNDIM LLQLERKAKR TRAVQPLRLP SNKAQVKPGQ TCSVAGWGQT APLGKHSHTL QEVKMTVQED RKCESDLRHY YDSTIELCVG DPEIKKTSFK GDSGGPLVCN KVAQGIVSYG RNNGMPPRAC TKVSSFVHWI KKTMKRY
Purification:	SDS-PAGE
Purity:	> 90 %

Target Details

Target:	RAB3IL1
Alternative Name:	GRAB (RAB3IL1 Products)
Background:	This enzyme is necessary for target cell lysis in cell-mediated immune responses. It cleaves

Target Details

after Asp. Ses to be linked to an activation cascade of caspases (aspartate-specific cysteine proteases) responsible for apoptosis execution. Cleaves caspase-3, -7, -9 and 10 to give rise to active enzymes mediating apoptosis.

Molecular Weight: 29.6 kDa

UniProt: [P10144](#)

Application Details

Application Notes: Optimal working dilution should be determined by the investigator.

Restrictions: For Research Use only

Handling

Format: Liquid

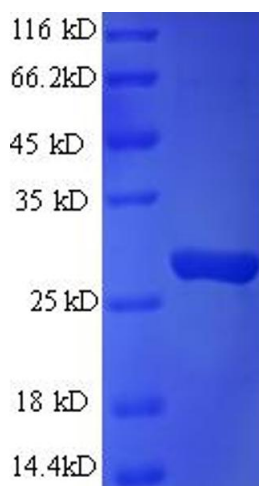
Concentration: 0.1-2 mg/mL

Buffer: 20 mM Tris-HCl based buffer, pH 8.0

Storage: -80 °C, 4 °C, -20 °C

Storage Comment: Store at -20°C, for extended storage, conserve at -20°C or -80°C. Repeated freezing and thawing is not recommended. Store working aliquots at 4°C for up to one week.

Images



SDS-PAGE

Image 1.