

Datasheet for ABIN570964

**anti-SH2D3A antibody (Internal Region)****2** Images[Go to Product page](#)

## Overview

Quantity:	100 µg
Target:	SH2D3A
Binding Specificity:	Internal Region
Reactivity:	Human
Host:	Goat
Clonality:	Polyclonal
Conjugate:	This SH2D3A antibody is un-conjugated
Application:	Western Blotting (WB), ELISA, Immunohistochemistry (IHC)

## Product Details

Purpose:	SH2D3A / NSP1
Immunogen:	Peptide with sequence C-APRAERFEKFQR, from the internal region (near C terminus) of the protein sequence according to NP_005481.2.
Sequence:	APRAERFEKF QR
Isotype:	IgG
Cross-Reactivity:	Human
Purification:	Purified from goat serum by ammonium sulphate precipitation followed by antigen affinity chromatography using the immunizing peptide.
Grade:	Verified

## Target Details

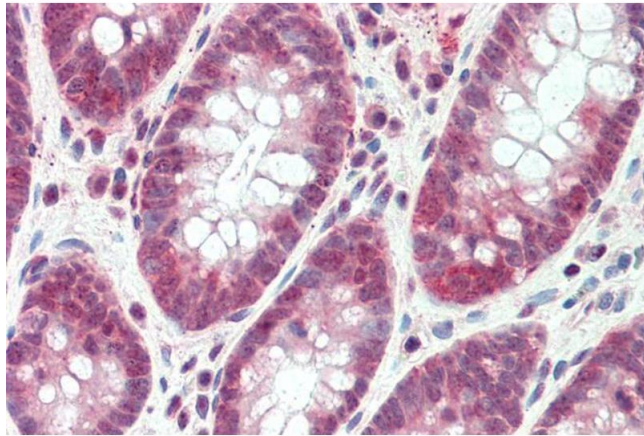
Target:	SH2D3A
Alternative Name:	SH2D3A ( <a href="#">SH2D3A Products</a> )
Background:	SH2D3A, NSP1, SH2 domain containing 3A, SH2 domain-containing 3A, novel SH2-containing protein 1
Gene ID:	10045
NCBI Accession:	<a href="#">NP_005481</a>

## Application Details

Application Notes:	<p>Immunohistochemistry: Paraffin embedded Human Colon. Recommended concentration: 5 µg/mL.</p> <p>Western Blot: Approx. 60 kDa band observed in Human Lung and Tonsil lysates (calculated MW of 63.1 kDa according to NP_005481.2). Recommended concentration: 0.1-0.3 µg/mL. Primary incubation was 1 hour.</p> <p>Peptide ELISA: antibody detection limit dilution 1:16000.</p>
Restrictions:	For Research Use only

## Handling

Format:	Liquid
Concentration:	0.5 mg/mL
Buffer:	Supplied at 0.5 mg/mL in Tris saline, 0.02 % sodium azide, pH 7.3 with 0.5 % bovine serum albumin.
Preservative:	Sodium azide
Precaution of Use:	This product contains Sodium azide: a POISONOUS AND HAZARDOUS SUBSTANCE which should be handled by trained staff only.
Handling Advice:	Minimize freezing and thawing.
Storage:	-20 °C
Storage Comment:	Aliquot and store at -20°C, with minimal freeze/thawing. A working aliquot may be refrigerated at 4°C for a few weeks and still remain viable.



#### Immunohistochemistry

**Image 1.** ABIN570964 (5µg/ml) staining of paraffin embedded Human Colon. Steamed antigen retrieval with citrate buffer pH 6, AP-staining.



#### Western Blotting

**Image 2.** ABIN570964 (0.1µg/ml) staining of Human Tonsil lysate (35µg protein in RIPA buffer). Detected by chemiluminescence.