

Datasheet for ABIN570969

anti-SLC7A5 antibody (Internal Region)**1** Image[Go to Product page](#)

Overview

Quantity:	100 µg
Target:	SLC7A5
Binding Specificity:	Internal Region
Reactivity:	Human
Host:	Goat
Clonality:	Polyclonal
Conjugate:	This SLC7A5 antibody is un-conjugated
Application:	Western Blotting (WB), ELISA

Product Details

Purpose:	LAT1 / SLC7A5
Immunogen:	Peptide with sequence C-RHRKPELERPIKVN, from the internal region of the protein sequence according to NP_003477.4.
Sequence:	RHRKPELERP IKVN
Isotype:	IgG
Cross-Reactivity:	Dog, Human
Purification:	Purified from goat serum by ammonium sulphate precipitation followed by antigen affinity chromatography using the immunizing peptide.
Grade:	Verified

Target Details

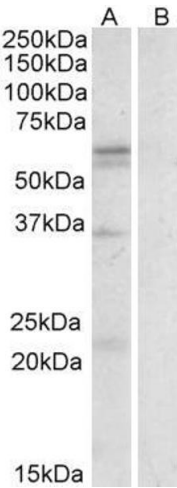
Target:	SLC7A5
Alternative Name:	SLC7A5 (SLC7A5 Products)
Background:	SLC7A5, solute carrier family 7 (cationic amino acid transporter, y+ system), member 5, 4F2LC, CD98, D16S469E, E16, LAT1, MPE16, hLAT1, 4F2 light chain, CD98 light chain, L-type amino acid transporter 1, integral membrane protein E16, large neutral amino
Gene ID:	8140
NCBI Accession:	NP_003477

Application Details

Application Notes:	Western Blot: Approx 60 kDa band observed in Human Spleen lysates (calculated MW of 55.0 kDa according to NP_003477.4). Recommended concentration: 1-3 µg/mL. Some minor background is detected and is blocked by the immunizing peptide. We call for caution whe Peptide ELISA: antibody detection limit dilution 1:64000.
Restrictions:	For Research Use only

Handling

Format:	Liquid
Concentration:	0.5 mg/mL
Buffer:	Supplied at 0.5 mg/mL in Tris saline, 0.02 % sodium azide, pH 7.3 with 0.5 % bovine serum albumin.
Preservative:	Sodium azide
Precaution of Use:	This product contains Sodium azide: a POISONOUS AND HAZARDOUS SUBSTANCE which should be handled by trained staff only.
Handling Advice:	Minimize freezing and thawing.
Storage:	-20 °C
Storage Comment:	Aliquot and store at -20°C, with minimal freeze/thawing. A working aliquot may be refrigerated at 4°C for a few weeks and still remain viable.



Western Blotting

Image 1. ABIN570969 (0.3µg/ml) staining of Human Spleen lysate (35µg protein in RIPA buffer) with (B) and without (A) blocking with the immunising peptide. Primary incubation was 1 hour. Detected by chemiluminescence.