



[Go to Product page](#)

Datasheet for ABIN5709693

ID1 Protein (AA 1-155, full length) (His-SUMO Tag)

1 Image

Overview

Quantity:	100 µg
Target:	ID1
Protein Characteristics:	full length, AA 1-155
Origin:	Human
Source:	Escherichia coli (E. coli)
Protein Type:	Recombinant
Purification tag / Conjugate:	This ID1 protein is labelled with His-SUMO Tag.
Application:	SDS-PAGE (SDS)

Product Details

Sequence:	MKVASGSTAT AAAGPSCALK AGKTASGAGE VVRCLSEQSV AISRCAGGAG ARLPALLDEQ QVNVLLYDMN GCYSRLKELV PTLPQNRKVS KVEILQHVID YIRDLQLELN SESEVGTPGG RGLPVRAPLS TLNGEISALT AEAACVPADD RILCR
Purification:	SDS-PAGE
Purity:	> 90 %

Target Details

Target:	ID1
Alternative Name:	ID1 (ID1 Products)
Background:	Transcriptional regulator (lacking a basic DNA binding domain) which negatively regulates the basic helix-loop-helix (bHLH) transcription factors by forming heterodimers and inhibiting their

Target Details

DNA binding and transcriptional activity. Implicated in regulating a variety of cellular processes, including cellular growth, senescence, differentiation, apoptosis, angiogenesis, and neoplastic transformation. Inhibits skeletal muscle and cardiac myocyte differentiation. Regulates the circadian clock by repressing the transcriptional activator activity of the CLOCK-ARNTL/BMAL1 heterodimer .

Molecular Weight: 32.1 kDa

UniProt: [P41134](#)

Application Details

Application Notes: Optimal working dilution should be determined by the investigator.

Restrictions: For Research Use only

Handling

Format: Liquid

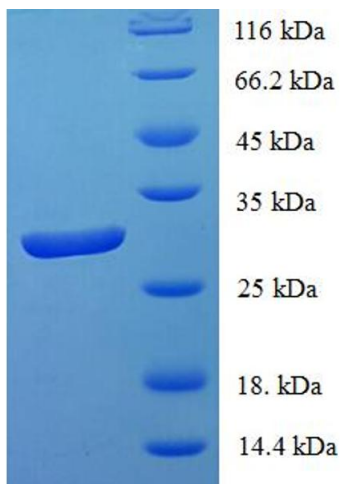
Concentration: 0.1-2 mg/mL

Buffer: 20 mM Tris-HCl based buffer, pH 8.0

Storage: -80 °C, 4 °C, -20 °C

Storage Comment: Store at -20°C, for extended storage, conserve at -20°C or -80°C. Repeated freezing and thawing is not recommended. Store working aliquots at 4°C for up to one week.

Images



SDS-PAGE

Image 1.