



[Go to Product page](#)

Datasheet for ABIN5709697

IDH1 Protein (AA 7-407, partial) (His tag)

1 Image

Overview

Quantity:	100 µg
Target:	IDH1
Protein Characteristics:	AA 7-407, partial
Origin:	Mouse
Source:	Escherichia coli (E. coli)
Protein Type:	Recombinant
Purification tag / Conjugate:	This IDH1 protein is labelled with His tag.
Application:	SDS-PAGE (SDS)

Product Details

Sequence:	GGSVEMQGD EMTRIIWELI KEKLILPYVE LDLHSYDLGI ENRDATNDQV TKDAAEAIKK YNVGVKCATI TPDEKRVEEF KLKQMWKSPN GTIRNILGGT VFREAIICKN IPRLVTGWVK PIIIGRHAYG DQYRATDFV VPGPGKVEITY TPKDGTQKVT YMVHDFEEGG GVAMGMYNQD KSIEDFAHSS FQMALSKGWP LYLSTKNTIL KKYDGRFKDI FQEIYDKKYK SQFEAQKICY EHLRIDDMVA QAMKSEGGFI WACKNYDGDV QSDSVAQGYG SLGMMTSVLI CPDGKTVEAE AAHGTVTRHY RMYQKGQETS TNPIASIFAW SRGLAHRACL DNNTLSFFA KALDVDCIET IEAGFMTKDL AACIKGLPNV QRSYDLNTE FMDKLGLENLK
Purification:	SDS-PAGE
Purity:	> 90 %

Target Details

Target:	IDH1
Alternative Name:	IDHC (IDH1 Products)
Molecular Weight:	49.2 kDa
UniProt:	O88844
Pathways:	Warburg Effect

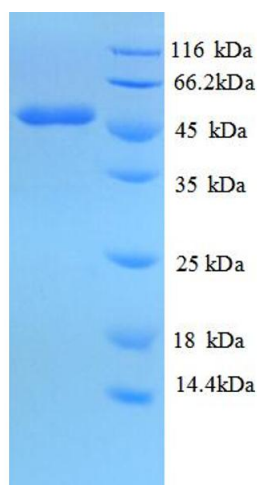
Application Details

Application Notes:	Optimal working dilution should be determined by the investigator.
Restrictions:	For Research Use only

Handling

Format:	Liquid
Concentration:	0.1-2 mg/mL
Buffer:	20 mM Tris-HCl based buffer, pH 8.0
Storage:	-80 °C, 4 °C, -20 °C
Storage Comment:	Store at -20°C, for extended storage, conserve at -20°C or -80°C. Repeated freezing and thawing is not recommended. Store working aliquots at 4°C for up to one week.

Images



SDS-PAGE

Image 1.