

Datasheet for ABIN570973
anti-Kallikrein 6 antibody (C-Term)[Go to Product page](#)

1 Image

Overview

| | |
|----------------------|---|
| Quantity: | 100 µg |
| Target: | Kallikrein 6 (KLK6) |
| Binding Specificity: | C-Term |
| Reactivity: | Mouse |
| Host: | Goat |
| Clonality: | Polyclonal |
| Conjugate: | This Kallikrein 6 antibody is un-conjugated |
| Application: | Western Blotting (WB), ELISA |

Product Details

| | |
|-------------------|---|
| Purpose: | Klk6 / neurosin (mouse) |
| Immunogen: | Peptide with sequence KEKPGVYTDVCTHIR, from the C Terminus of the protein sequence according to NP_035307.1. |
| Sequence: | KEKPGVYTDV CTHIR |
| Isotype: | IgG |
| Cross-Reactivity: | Cow, Mouse, Rat |
| Purification: | Purified from goat serum by ammonium sulphate precipitation followed by antigen affinity chromatography using the immunizing peptide. |
| Grade: | Verified |

Target Details

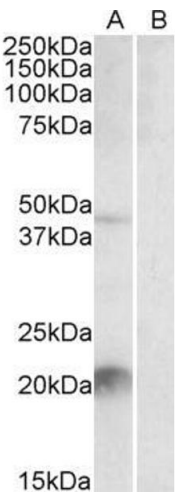
| | |
|-------------------|--|
| Target: | Kallikrein 6 (KLK6) |
| Alternative Name: | Klk6 (KLK6 Products) |
| Background: | Klk6, kallikrein related-peptidase 6, A1849898, Bssp, Klk29, Klk7, Prss18, Prss9, neurosin, kallikrein 29, kallikrein 6, kallikrein 7, protease M, protease, serine, 18, protease, serine, 9 |
| Gene ID: | 19144, 29245 |
| NCBI Accession: | NP_035307 |
| Pathways: | Complement System , Regulation of G-Protein Coupled Receptor Protein Signaling |

Application Details

| | |
|--------------------|--|
| Application Notes: | Western Blot: Approx 22 kDa band observed in Mouse Liver lysates (calculated MW of 27.5 kDa according to NP_035307.1). Recommended concentration: 1-3 µg/mL. An additional band of unknown identity was also consistently observed at 48 kDa. Both bands were suc Peptide ELISA: antibody detection limit dilution 1:16000. |
| Restrictions: | For Research Use only |

Handling

| | |
|--------------------|--|
| Format: | Liquid |
| Concentration: | 0.5 mg/mL |
| Buffer: | Supplied at 0.5 mg/mL in Tris saline, 0.02 % sodium azide, pH 7.3 with 0.5 % bovine serum albumin. |
| Preservative: | Sodium azide |
| Precaution of Use: | This product contains Sodium azide: a POISONOUS AND HAZARDOUS SUBSTANCE which should be handled by trained staff only. |
| Handling Advice: | Minimize freezing and thawing. |
| Storage: | -20 °C |
| Storage Comment: | Aliquot and store at -20°C, with minimal freeze/thawing. A working aliquot may be refrigerated at 4°C for a few weeks and still remain viable. |



Western Blotting

Image 1. ABIN570973 staining (2µg/ml) of Mouse Liver lysate (35µg protein in RIPA buffer) with (B) and without (A) blocking with the immunising peptide. Primary incubation was 1 hour. Detected by chemiluminescence.