



[Go to Product page](#)

Datasheet for ABIN5709761

INHBA Protein (AA 311-426) (His-SUMO Tag)

1 Image

Overview

Quantity:	100 µg
Target:	INHBA
Protein Characteristics:	AA 311-426
Origin:	Human
Source:	Escherichia coli (E. coli)
Protein Type:	Recombinant
Purification tag / Conjugate:	This INHBA protein is labelled with His-SUMO Tag.
Application:	SDS-PAGE (SDS)

Product Details

Sequence:	GLECDGKVN I CCKKQFFVSF KDIGWNDWII APSGYHANYC EGECPSHIAG TSGSSLSFHS TVINHYMRG HSPFANLKSC CVPTKLRPMS MLYYDDGQNI IKKDIQNMIV EECGCS
Purification:	SDS-PAGE
Purity:	> 90 %

Target Details

Target:	INHBA
Alternative Name:	INHBA (INHBA Products)
Background:	Inhibins and activins inhibit and activate, respectively, the secretion of follitropin by the pituitary gland. Inhibins/activins are involved in regulating a number of diverse functions such as hypothalamic and pituitary hormone secretion, gonadal hormone secretion, germ cell

Target Details

development and maturation, erythroid differentiation, insulin secretion, nerve cell survival, bryonic axial development or bone growth, depending on their subunit composition. Inhibins appear to oppose the functions of activins.

Molecular Weight: 28.97 kDa

UniProt: [P08476](#)

Pathways: [Hormone Transport](#), [Peptide Hormone Metabolism](#), [Hormone Activity](#), [Negative Regulation of Hormone Secretion](#), [Autophagy](#)

Application Details

Application Notes: Optimal working dilution should be determined by the investigator.

Restrictions: For Research Use only

Handling

Format: Liquid

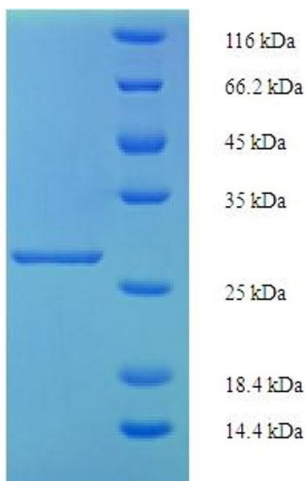
Concentration: 0.1-2 mg/mL

Buffer: 20 mM Tris-HCl based buffer, pH 8.0

Storage: -80 °C, 4 °C, -20 °C

Storage Comment: Store at -20°C, for extended storage, conserve at -20°C or -80°C. Repeated freezing and thawing is not recommended. Store working aliquots at 4°C for up to one week.

Images



SDS-PAGE

Image 1.