

Datasheet for ABIN5709781

JAM2 Protein (AA 29-238, Extracellular) (His tag)[Go to Product page](#)**1** Image

Overview

Quantity:	100 µg
Target:	JAM2
Protein Characteristics:	Extracellular, AA 29-238
Origin:	Human
Source:	Escherichia coli (E. coli)
Protein Type:	Recombinant
Purification tag / Conjugate:	This JAM2 protein is labelled with His tag.
Application:	SDS-PAGE (SDS)

Product Details

Sequence:	FSAPKDQQVV TAVEYQEAIL ACKTPKKTVS SRLEWKKLGR SVSFVYYQQT LQGDFKNRAE MIDFNIRIKN VTRSDAGKYR CEVSAPSEQG QNLEEDTVTL EVLVAPAVPS CEVPSSALSG TVVELRCQDK EGNPAPEYTW FKDGIRLLEN PRLGSQSTNS SYTMNTKTGT LQFNTVSKLD TGEYSCEARN SVGYRRCPGK RMQVDDLNIS
Purification:	SDS-PAGE
Purity:	> 90 %

Target Details

Target:	JAM2
Alternative Name:	JAM2 (JAM2 Products)
Background:	May play a role in the processes of lymphocyte homing to secondary lymphoid organs.

Target Details

Molecular Weight: 27.5 kDa

UniProt: [P57087](#)

Application Details

Application Notes: Optimal working dilution should be determined by the investigator.

Restrictions: For Research Use only

Handling

Format: Liquid

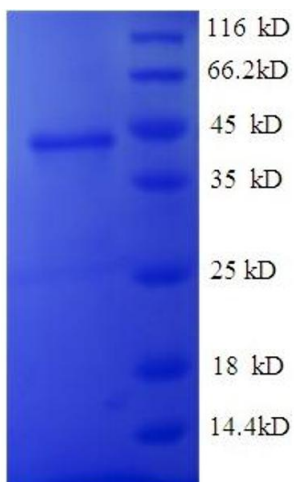
Concentration: 0.1-2 mg/mL

Buffer: 20 mM Tris-HCl based buffer, pH 8.0

Storage: -80 °C, 4 °C, -20 °C

Storage Comment: Store at -20°C, for extended storage, conserve at -20°C or -80°C. Repeated freezing and thawing is not recommended. Store working aliquots at 4°C for up to one week.

Images



SDS-PAGE

Image 1.