

Datasheet for ABIN5709825

## KRT14 Protein (AA 1-472, full length) (His-SUMO Tag)



[Go to Product page](#)

### 1 Image

#### Overview

Quantity:	100 µg
Target:	KRT14
Protein Characteristics:	full length, AA 1-472
Origin:	Human
Source:	Escherichia coli (E. coli)
Protein Type:	Recombinant
Purification tag / Conjugate:	This KRT14 protein is labelled with His-SUMO Tag.
Application:	SDS-PAGE (SDS)

#### Product Details

Sequence:	MTTCSRQFTS SSSMKGSCGI GGGIGGGSSR ISSVLAGGSC RAPSTYGGGL SVSSSRFSSG GACGLGGGYG GGFSSSSSF GSGFGGGYGG GLGAGLGGGF GGFAGGDGL LVGSEKVTMQ NLNDRLASYL DKVRALEEAN ADLEVKIRDW YQRQRP AEIK DYSPYFKTIE DLRNKILTAT VDNANVLLQI DNARLAADD F RTKYETELNL RMSVEADING LRRVDELTL ARADLEMQIE SLKEELAYLK KNHEEEMNAL RGQVGGDVNV EMDAAPGVDL SRILNEMRDQ YEKMAEKNRK DAEWFFTKT EELNRE VATN SELVQSGKSE ISELRRMQN LEIELQS QLS MKASLENSLE ETKGRYCMQL AQIQEMIGSV EEQLAQLRCE MEQQNQEYKI LLDVKTRLEQ EIATYRRLL E GEDAHLSSSQ FSSGSQSSRD VTSSSRQIRT KVMDVHDGKV VSTHEQVLRT KN
Purification:	SDS-PAGE
Purity:	> 90 %

## Target Details

Target:	KRT14
Alternative Name:	K1C14 ( <a href="#">KRT14 Products</a> )
Background:	The nonhelical tail domain is involved in promoting KRT5-KRT14 filaments to self-organize into large bundles and enhances the mechanical properties involved in resilience of keratin intermediate filaments in vitro.
Molecular Weight:	67.5 kDa
UniProt:	<a href="#">P02533</a>

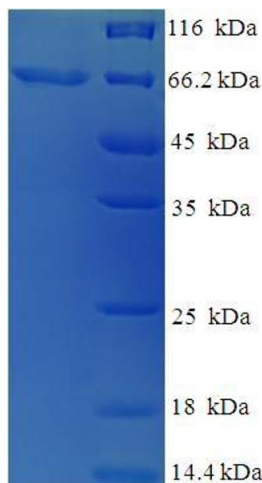
## Application Details

Application Notes:	Optimal working dilution should be determined by the investigator.
Restrictions:	For Research Use only

## Handling

Format:	Liquid
Concentration:	0.1-2 mg/mL
Buffer:	20 mM Tris-HCl based buffer, pH 8.0
Storage:	-80 °C, 4 °C, -20 °C
Storage Comment:	Store at -20°C, for extended storage, conserve at -20°C or -80°C. Repeated freezing and thawing is not recommended. Store working aliquots at 4°C for up to one week.

## Images



### SDS-PAGE

#### Image 1.