

Datasheet for ABIN5709829

KRT38 Protein (AA 2-456) (His-SUMO Tag)[Go to Product page](#)**1** Image

Overview

Quantity:	100 µg
Target:	KRT38
Protein Characteristics:	AA 2-456
Origin:	Human
Source:	Escherichia coli (E. coli)
Protein Type:	Recombinant
Purification tag / Conjugate:	This KRT38 protein is labelled with His-SUMO Tag.
Application:	SDS-PAGE (SDS)

Product Details

Sequence:	TSSYSSSSCP LGCTMAPGAR NVSVSPIDIG CQPGAANIA PMCLLANVAH ANRVRVGSTP LGRPSLCLPP TCHTACPLPG TCHIPGNIGI CGAYGENTLN GHEKETMQFL NDRLANYLEK VRQLEQENAE LEATLLERSK CHESTVCPDY QSYFHTIEEL QKILCSKAE NARLIVQIDN AKLAADDFRI KLESERSLRQ LVEADKCGTQ KLLDDATLAK ADLEAQQESL KEEQLSLKSN HEQEVKILRS QLGEKLRIEL DIEPTIDLNR VLGEMRAQYE AMLETNRQDV EQWFQAQSEG ISLQDMSCSE ELQCCQSEIL ELRCTVNALE VERQAQHTLK DCLQNSLCEA EDRFGTELAQ MQLSISNVEE QLSEIRADLE RQNQEYQVLL DVKTRLENEI ATYRNLLESE DCKLPCNPCS TPPSCVTAPC APRPSCGPCT TCGPTCGAST TGSRF
Purification:	SDS-PAGE
Purity:	> 90 %

Target Details

Target:	KRT38
Alternative Name:	KRT38 (KRT38 Products)
Molecular Weight:	66.3 kDa
UniProt:	076015

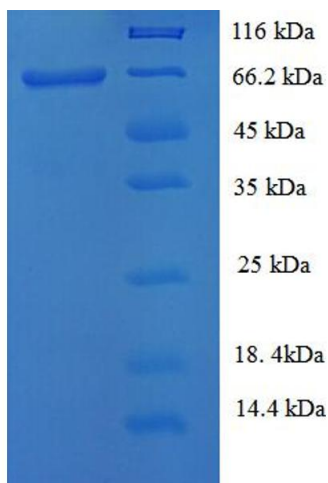
Application Details

Application Notes:	Optimal working dilution should be determined by the investigator.
Restrictions:	For Research Use only

Handling

Format:	Liquid
Concentration:	0.1-2 mg/mL
Buffer:	20 mM Tris-HCl based buffer, pH 8.0
Storage:	-80 °C, 4 °C, -20 °C
Storage Comment:	Store at -20°C, for extended storage, conserve at -20°C or -80°C. Repeated freezing and thawing is not recommended. Store working aliquots at 4°C for up to one week.

Images



SDS-PAGE

Image 1.