

Datasheet for ABIN570983  
**anti-FMR1 antibody (AA 116-130)**

## 3 Images

[Go to Product page](#)

## Overview

Quantity:	100 µg
Target:	FMR1
Binding Specificity:	AA 116-130
Reactivity:	Human
Host:	Goat
Clonality:	Polyclonal
Conjugate:	This FMR1 antibody is un-conjugated
Application:	Western Blotting (WB), Immunohistochemistry (IHC), ELISA

## Product Details

Purpose:	FMR1 (aa116-130)
Immunogen:	Peptide with sequence C-NPNKPATKDTFHKIK, from the internal region of the protein sequence according to NP_002015.1.
Sequence:	NPNKPATKDT FHKIK
Isotype:	IgG
Cross-Reactivity:	Human, Rat
Purification:	Purified from goat serum by ammonium sulphate precipitation followed by antigen affinity chromatography using the immunizing peptide.
Grade:	Verified

## Target Details

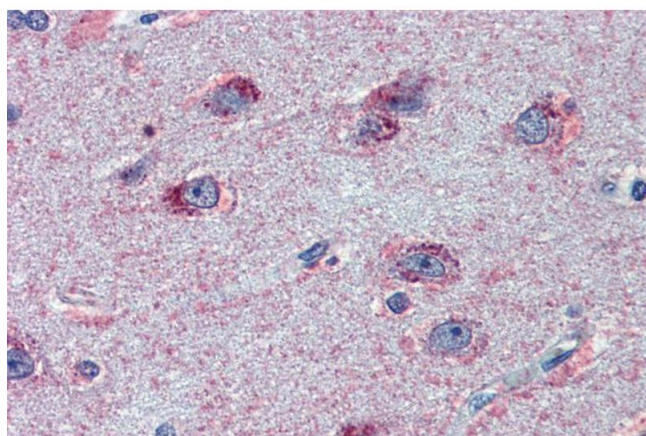
Target:	FMR1
Alternative Name:	FMR1 ( <a href="#">FMR1 Products</a> )
Background:	FMR1, fragile X mental retardation 1, FMRP, FRAXA, MGC87458
Gene ID:	2332, 24948
NCBI Accession:	<a href="#">NP_002015</a>
Pathways:	<a href="#">Regulation of Muscle Cell Differentiation</a> , <a href="#">Skeletal Muscle Fiber Development</a>

## Application Details

Application Notes:	Immunohistochemistry: Paraffin embedded Human Brain (Cortex) and Placenta. Recommended concentration: 2.5 µg/mL. Western Blot: Approx 70 kDa band observed in lysates of cell lines HeLa, Jurkat and Kelly (calculated MW of 71.2 kDa according to NP_002015.1). Recommended concentration: 0.3-1 µg/mL. Peptide ELISA: antibody detection limit dilution 1:32000.
Restrictions:	For Research Use only

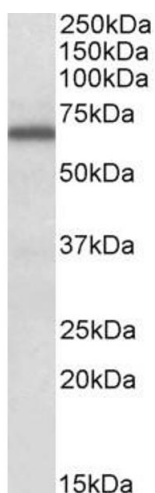
## Handling

Format:	Liquid
Concentration:	0.5 mg/mL
Buffer:	Supplied at 0.5 mg/mL in Tris saline, 0.02 % sodium azide, pH 7.3 with 0.5 % bovine serum albumin.
Preservative:	Sodium azide
Precaution of Use:	This product contains Sodium azide: a POISONOUS AND HAZARDOUS SUBSTANCE which should be handled by trained staff only.
Handling Advice:	Minimize freezing and thawing.
Storage:	-20 °C
Storage Comment:	Aliquot and store at -20°C, with minimal freeze/thawing. A working aliquot may be refrigerated at 4°C for a few weeks and still remain viable.



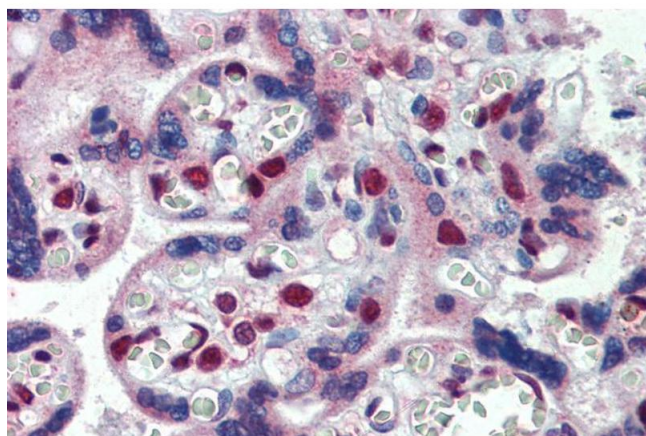
#### Immunohistochemistry

**Image 1.** ABIN570983 (2.5µg/ml) staining of paraffin embedded Human Cortex. Steamed antigen retrieval with citrate buffer pH 6, AP-staining.



#### Western Blotting

**Image 2.** ABIN570983 (0.3µg/ml) staining of Kelly lysate (35µg protein in RIPA buffer). Primary incubation was 1 hour. Detected by chemiluminescence.



#### Immunohistochemistry

**Image 3.** ABIN570983 (2.5µg/ml) staining of paraffin embedded Human Placenta. Steamed antigen retrieval with citrate buffer pH 6, AP-staining.