

Datasheet for ABIN5709833  
**KRT6A Protein (AA 2-564) (GST tag)**



[Go to Product page](#)

1 Image

## Overview

Quantity:	100 µg
Target:	KRT6A
Protein Characteristics:	AA 2-564
Origin:	Human
Source:	Escherichia coli (E. coli)
Protein Type:	Recombinant
Purification tag / Conjugate:	This KRT6A protein is labelled with GST tag.
Application:	SDS-PAGE (SDS)

## Product Details

Sequence:	ASTSTTIRSH SSSRRGFSAS SARLPGVSRS GFSSVSVSRS RGSGLGGAC GGAGFGSRSL YGLGSKRIS IGGSCAISG GYGRAGGSY GFGGAGSGFG FGGGAGIGFG LGGAGLAGG FGGPGFPVCP PGGIQEVTVN QSLLTPLNLQ IDPTIQRVRA EEREQIKTLN NKFASFIDKV RFLEQQNKVL ETKWTLLQEQ GTKTVRQNLE PLFEQYINNL RRQLDSIVGE RGRLDSELRG MQDLVEDFKN KYEDEINKRT AAENEFVTLK KDVDAAYMNK VELQAKADTL TDEINFLRAL YDAELSQMQT HISDTSVLS MDNNRNLDDL SIIAEVKAQY EEIAQRSRAE AESWYQTKYE ELQVTAGRHG DDLRNTKQEI AEINRMIQRL RSEIDHVKKQ CANLQAAIAD AEQRGEMALK DAKNKLEGLE DALQKAKQDL ARLLKEYQEL MNVKLALDVE IATYRKLLEG EECRLNGEGV GQVNISVVQS TVSSGYGGAS GVGSLGLGG GSSYSYGSGL GVGGGFSSSS GRAIGGLSS VGGGSSTIKY TTTSSSSRKS YKH
Purification:	SDS-PAGE
Purity:	> 90 %

## Target Details

---

Target:	KRT6A
Alternative Name:	K2C6A ( <a href="#">KRT6A Products</a> )
Background:	Epidermis-specific type I keratin involved in wound healing. Involved in the activation of follicular keratinocytes after wounding, while it does not play a major role in keratinocyte proliferation or migration. Participates in the regulation of epithelial migration by inhibiting the activity of SRC during wound repair.
Molecular Weight:	87.3 kDa
UniProt:	<a href="#">P02538</a>

## Application Details

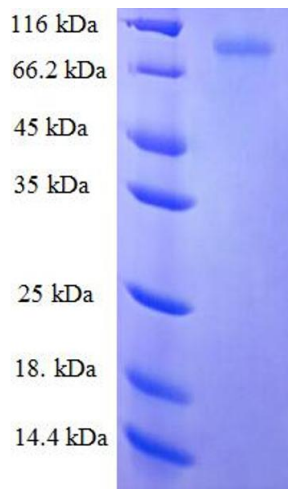
---

Application Notes:	Optimal working dilution should be determined by the investigator.
Restrictions:	For Research Use only

## Handling

---

Format:	Liquid
Concentration:	0.1-2 mg/mL
Buffer:	20 mM Tris-HCl based buffer, pH 8.0
Storage:	-80 °C, 4 °C, -20 °C
Storage Comment:	Store at -20°C, for extended storage, conserve at -20°C or -80°C. Repeated freezing and thawing is not recommended. Store working aliquots at 4°C for up to one week.



**SDS-PAGE**

**Image 1.**