

Datasheet for ABIN5709843  
**LEG1 Protein (AA 2-135) (His-SUMO Tag)**



[Go to Product page](#)

1 Image

Overview

Quantity:	100 µg
Target:	LEG1
Protein Characteristics:	AA 2-135
Origin:	Human
Source:	Escherichia coli (E. coli)
Protein Type:	Recombinant
Purification tag / Conjugate:	This LEG1 protein is labelled with His-SUMO Tag.
Application:	SDS-PAGE (SDS)

Product Details

Sequence:	ACGLVASNLN LKPGECLRVR GEVAPDAKSF VLNLGKDSNN LCLHFNPRFN AHGDANTIVC NSKDGGAWGT EQREAVFPFQ PGSVAEVCIT FDQANLTVKL PDGYEFKFPN RLNLEAINYM AADGDFKIKC VAFD
Purification:	SDS-PAGE
Purity:	> 90 %

Target Details

Target:	LEG1
Alternative Name:	LEG1 ( <a href="#">LEG1 Products</a> )
Background:	May regulate apoptosis, cell proliferation and cell differentiation. Binds beta-galactoside and a wide array of complex carbohydrates. Inhibits CD45 protein phosphatase activity and therefore

## Target Details

the dephosphorylation of Lyn kinase. Strong inducer of T-cell apoptosis.

Molecular Weight: 30.58 kDa

UniProt: [P09382](#)

## Application Details

Application Notes: Optimal working dilution should be determined by the investigator.

Restrictions: For Research Use only

## Handling

Format: Liquid

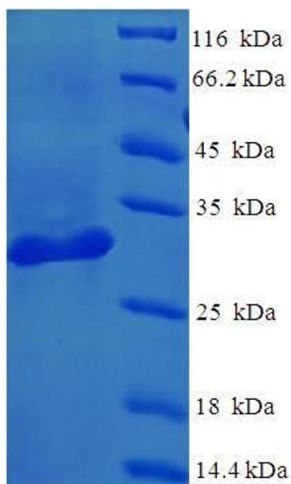
Concentration: 0.1-2 mg/mL

Buffer: 20 mM Tris-HCl based buffer, pH 8.0

Storage: -80 °C, 4 °C, -20 °C

Storage Comment: Store at -20°C, for extended storage, conserve at -20°C or -80°C. Repeated freezing and thawing is not recommended. Store working aliquots at 4°C for up to one week.

## Images



### SDS-PAGE

Image 1.