



[Go to Product page](#)

Datasheet for ABIN5709869

LOXL1 Protein (AA 106-574, partial) (His tag)

1 Image

Overview

Quantity:	100 µg
Target:	LOXL1
Protein Characteristics:	AA 106-574, partial
Origin:	Human
Source:	Escherichia coli (E. coli)
Protein Type:	Recombinant
Purification tag / Conjugate:	This LOXL1 protein is labelled with His tag.
Application:	SDS-PAGE (SDS)

Product Details

Sequence:	<p>VGSDTVRGQA RHPFGFGQVP DNWREVAVGD STGMARARTS VSQQRHGGSA SSVSASAFAS TYRQQPSYPQ QFPYPQAPFV SQYENYDPAS RTYDQGFVYY RPAGGGVGAG AAVASAGVI YPYQPRARYE EYGGGEELPE YPPQGFYPAP ERPYVPPPPP PPDGLDRRYS HSLYSEGTPG FEQAYPDPGP EAAQAHGGDP RLGWYPPYAN PPPEAYGPPR ALEPPYLPVR SSDTPPPGGE RNGAQQGRLS VGSVYRPNQN GRGLPDLVPD PNYVQASTYV QRAHLYSLRC AAEEKCLAST AYAPEATDYD VRVLLRFPQR VKNQGTADFL PNRPRHTWEW HSCHQHYHSM DEFSHYDLLD AATGKKVAEG HKASFCELEDS TCDFGNLKRY ACTSHTQGLS PGCYDTYNAD IDCQWIDITD VQPGNYILKV HVNPKYIVLE SDFTNVVRRC NIHYTGRYVS ATNCKIVQS</p>
Purification:	SDS-PAGE
Purity:	> 90 %

Target Details

Target:	LOXL1
Alternative Name:	LOXL1 (LOXL1 Products)
Background:	Active on elastin and collagen substrates.
Molecular Weight:	55.8 kDa
UniProt:	Q08397

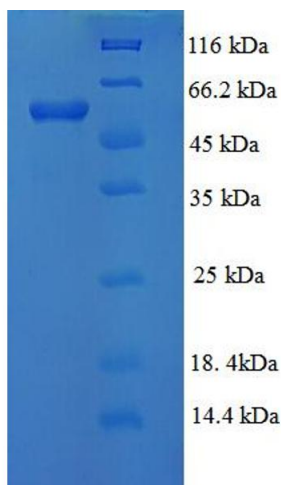
Application Details

Application Notes:	Optimal working dilution should be determined by the investigator.
Restrictions:	For Research Use only

Handling

Format:	Liquid
Concentration:	0.1-2 mg/mL
Buffer:	20 mM Tris-HCl based buffer, pH 8.0
Storage:	-80 °C,4 °C,-20 °C
Storage Comment:	Store at -20°C, for extended storage, conserve at -20°C or -80°C. Repeated freezing and thawing is not recommended. Store working aliquots at 4°C for up to one week.

Images



SDS-PAGE

Image 1.