



[Go to Product page](#)

Datasheet for ABIN570988

anti-PPP4C antibody (C-Term)

3 Images

Overview

Quantity:	100 µg
Target:	PPP4C
Binding Specificity:	C-Term
Reactivity:	Human, Rat
Host:	Goat
Clonality:	Polyclonal
Conjugate:	This PPP4C antibody is un-conjugated
Application:	Western Blotting (WB), Immunohistochemistry (IHC), ELISA

Product Details

Purpose:	PPP4C
Immunogen:	Peptide with sequence C-PQETRGIPSKKP, from the C Terminus of the protein sequence according to NP_002711.1.
Sequence:	PQETRGIPSK KP
Isotype:	IgG
Cross-Reactivity:	Dog, Human, Rat
Purification:	Purified from goat serum by ammonium sulphate precipitation followed by antigen affinity chromatography using the immunizing peptide.
Grade:	Verified

Target Details

Target:	PPP4C
Alternative Name:	PPP4C (PPP4C Products)
Background:	PPP4C, protein phosphatase 4 (formerly X), catalytic subunit, PP4, PPH3, PPX, Protein phosphatase 4, catalytic subunit
Gene ID:	5531, 171366
NCBI Accession:	NP_002711

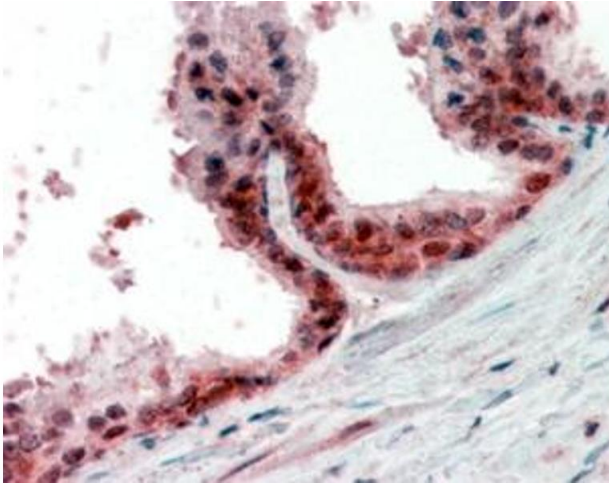
Application Details

Application Notes:	<p>Immunohistochemistry: In paraffin embedded Human Prostate shows nuclear staining of secretory cells in the gland. Recommended concentration, 2-4 µg/mL.</p> <p>Western Blot: Approx 35 kDa band observed in HEK293, A431 and HeLa lysates and in Rat Spleen and Lung lysates (calculated MW of 35.1 kDa according to NP_002711.1). Recommended concentration: 0.1-0.3 µg/mL.</p> <p>Peptide ELISA: antibody detection limit dilution 1:16000.</p>
--------------------	--

Restrictions:	For Research Use only
---------------	-----------------------

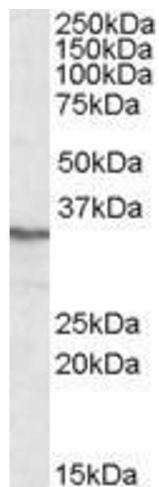
Handling

Format:	Liquid
Concentration:	0.5 mg/mL
Buffer:	Supplied at 0.5 mg/mL in Tris saline, 0.02 % sodium azide, pH 7.3 with 0.5 % bovine serum albumin.
Preservative:	Sodium azide
Precaution of Use:	This product contains Sodium azide: a POISONOUS AND HAZARDOUS SUBSTANCE which should be handled by trained staff only.
Handling Advice:	Minimize freezing and thawing.
Storage:	-20 °C
Storage Comment:	Aliquot and store at -20°C, with minimal freeze/thawing. A working aliquot may be refrigerated at 4°C for a few weeks and still remain viable.



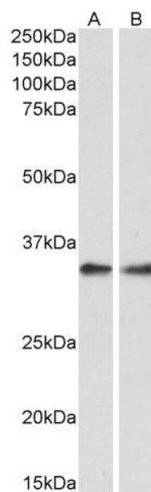
Immunohistochemistry

Image 1. ABIN570988 (2.5µg/ml) staining of paraffin embedded Human Prostate. Steamed antigen retrieval with citrate buffer pH 6, AP-staining.



Western Blotting

Image 2. ABIN570988 (0.3µg/ml) staining of HEK293 lysate (35µg protein in RIPA buffer). Primary incubation was 1 hour. Detected by chemiluminescence.



Western Blotting

Image 3. ABIN570988 (0.3µg/ml) staining of Rat Spleen (A) and Lung (B) lysate (35µg protein in RIPA buffer). Primary incubation was 1 hour. Detected by chemiluminescence.