

Datasheet for ABIN570992
anti-PPP2R4 antibody (C-Term)



[Go to Product page](#)

2 Images

Overview

Quantity:	100 µg
Target:	PPP2R4
Binding Specificity:	C-Term
Reactivity:	Human, Mouse, Rat
Host:	Goat
Clonality:	Polyclonal
Conjugate:	This PPP2R4 antibody is un-conjugated
Application:	Western Blotting (WB), Immunohistochemistry (IHC), ELISA

Product Details

Purpose:	PPP2R4 / PP2A
Immunogen:	Peptide with sequence C-GSLLPIHPVTSG, from the C Terminus of the protein sequence according to NP_821068.1, NP_066954.2, NP_821070.1.
Sequence:	GSLLPIHPVT SG
Isotype:	IgG
Specificity:	This antibody is expected to recognize all reported isoforms (NP_821068.1, NP_066954.2, NP_821070.1). Reported variants NP_066954.2 and NP_821067.1 represent identical protein.
Cross-Reactivity:	Cow, Dog, Human, Mouse, Rat
Purification:	Purified from goat serum by ammonium sulphate precipitation followed by antigen affinity chromatography using the immunizing peptide.

Product Details

Grade: Verified

Target Details

Target: PPP2R4

Alternative Name: PTPA ([PPP2R4 Products](#))

Background: PPP2R4, protein phosphatase 2A activator, regulatory subunit 4, MGC2184, PP2A, PR53, PTPA, OTTHUMP00000022333, PP2A phosphatase activator, PP2A, subunit B', phosphotyrosyl phosphatase activator, protein phosphatase 2A, regulatory subunit B', protein phosph

Gene ID: 5524, 110854, 362102

NCBI Accession: [NP_821068](#), [NP_066954](#), [NP_821070](#)

Pathways: [PI3K-Akt Signaling](#), [M Phase](#), [Hepatitis C](#), [Toll-Like Receptors Cascades](#)

Application Details

Application Notes: Immunohistochemistry: Paraffin embedded Human Testis. Recommended concentration: 3.75 µg/mL.
Western Blot: Approx 37 kDa band observed in Human, Mouse and Rat Liver lysates and in lysates of cell line HepG2 (calculated MW of 36.8 kDa according to NP_066954.2).
Recommended concentration: 0.5-2 µg/mL. Primary incubation was 1 hour.
Peptide ELISA: antibody detection limit dilution 1:32000.

Restrictions: For Research Use only

Handling

Format: Liquid

Concentration: 0.5 mg/mL

Buffer: Supplied at 0.5 mg/mL in Tris saline, 0.02 % sodium azide, pH 7.3 with 0.5 % bovine serum albumin.

Preservative: Sodium azide

Precaution of Use: This product contains Sodium azide: a POISONOUS AND HAZARDOUS SUBSTANCE which should be handled by trained staff only.

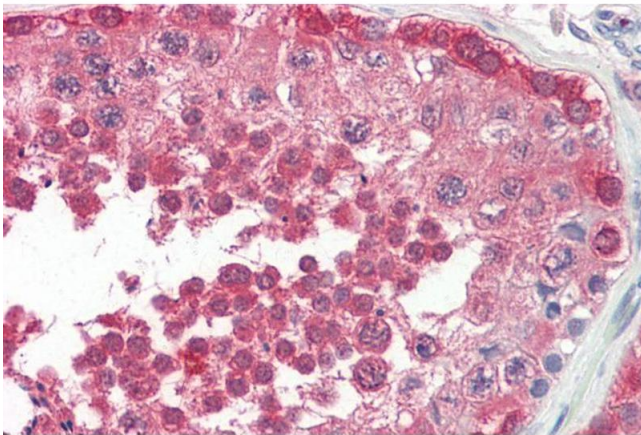
Handling Advice: Minimize freezing and thawing.

Handling

Storage: -20 °C

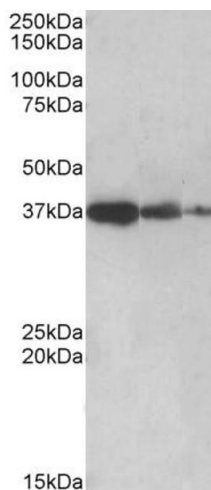
Storage Comment: Aliquot and store at -20°C, with minimal freeze/thawing. A working aliquot may be refrigerated at 4°C for a few weeks and still remain viable.

Images



Immunohistochemistry

Image 1. ABIN570992 (3.75µg/ml) staining of paraffin embedded Human Testis. Steamed antigen retrieval with citrate buffer pH 6, AP-staining.



Western Blotting

Image 2. ABIN570992 (0.5µg/ml) staining of Human Liver lysate (lane 1), Mouse Liver (lane 2) and Rat Liver (lane 3) (35µg protein in RIPA buffer). Detected by chemiluminescence.