



[Go to Product page](#)

Datasheet for ABIN5709923

MDH2 Protein (AA 25-338) (His-SUMO Tag)

1 Image

Overview

Quantity:	100 µg
Target:	MDH2
Protein Characteristics:	AA 25-338
Origin:	Human
Source:	Escherichia coli (E. coli)
Protein Type:	Recombinant
Purification tag / Conjugate:	This MDH2 protein is labelled with His-SUMO Tag.
Application:	SDS-PAGE (SDS)

Product Details

Sequence:	AKVAVLGASG GIGQPLSLLL KNSPLVSRLT LYDIAHTPGV AADLSHIETK AAVKGYLGPE QLPDCLKGCD VVIPAGVPR KPGMTRDDL FNTNATIVATL TAACAQHCPE AMICVIANPV NSTIPITAEV FKKHGVYNPN KIFGVTTLDI VRANTFVAEL KGLDPAVVNV PVIGGHAGKT IIP LISQCTP KVDFPQDQLT ALTGRIQEAG TEVVKAKAGA GSATLSMAYA GARFVFLVD AMNGKEGVVE CSFVKSQETE CTYFSTPLLL GKKGIEKNLG IGVSSFEEK MISDAIPELK ASIKKGEDFV KTLK
Purification:	SDS-PAGE
Purity:	> 90 %

Target Details

Target:	MDH2
---------	------

Target Details

Alternative Name: MDHM ([MDH2 Products](#))

Molecular Weight: 49 kDa

UniProt: [P40926](#)

Application Details

Application Notes: Optimal working dilution should be determined by the investigator.

Restrictions: For Research Use only

Handling

Format: Liquid

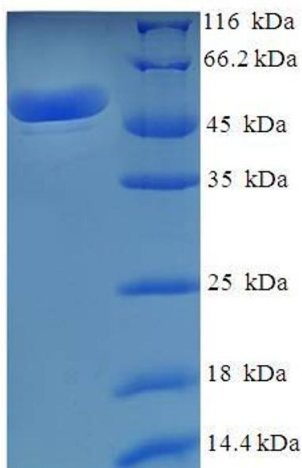
Concentration: 0.1-2 mg/mL

Buffer: 20 mM Tris-HCl based buffer, pH 8.0

Storage: -80 °C, 4 °C, -20 °C

Storage Comment: Store at -20°C, for extended storage, conserve at -20°C or -80°C. Repeated freezing and thawing is not recommended. Store working aliquots at 4°C for up to one week.

Images



SDS-PAGE

Image 1.