

Datasheet for ABIN570993  
**anti-CPNE1 antibody (C-Term)**



[Go to Product page](#)

1 Image

## Overview

Quantity:	100 µg
Target:	CPNE1
Binding Specificity:	C-Term
Reactivity:	Human
Host:	Goat
Clonality:	Polyclonal
Conjugate:	This CPNE1 antibody is un-conjugated
Application:	Western Blotting (WB), ELISA

## Product Details

Purpose:	Copine 1
Immunogen:	C-APLKPLPPSAKDPA
Sequence:	APLKPLPPSA KDPA
Isotype:	IgG
Specificity:	This antibody is expected to recognize isoform a and b (NP_003906.2, NP_690902.1). Reported variants represent identical protein: NP_690905.1, NP_690902.1, NP_690903.1, NP_690906.1, NP_690904.1, NP_690907.1, NP_690908.1.
Cross-Reactivity:	Human
Purification:	Purified from goat serum by ammonium sulphate precipitation followed by antigen affinity chromatography using the immunizing peptide.

## Product Details

---

Grade: Verified

## Target Details

---

Target: CPNE1

Alternative Name: CPNE1 ([CPNE1 Products](#))

Background: CPNE1, copine I, COPN1, CPN1, MGC1142, OTTHUMP00000030775, OTTHUMP00000030776, copine-1

Gene ID: 8904

NCBI Accession: [NP\\_690902](#), [NP\\_003906](#)

## Application Details

---

Application Notes: Western Blot: Approx 55 kDa band observed in Human Skin lysates (calculated MW of 59.1 kDa according to NP\_690902.1). Recommended concentration: 0.1-0.3 µg/mL.  
Peptide ELISA: antibody detection limit dilution 1:16000.

Comment: **Additional validation:** This antibody has been successfully used in the following paper: Sikorski et al. (2018) PMID: 30377371.

Restrictions: For Research Use only

## Handling

---

Format: Liquid

Concentration: 0.5 mg/mL

Buffer: Supplied at 0.5 mg/mL in Tris saline, 0.02 % sodium azide, pH 7.3 with 0.5 % bovine serum albumin.

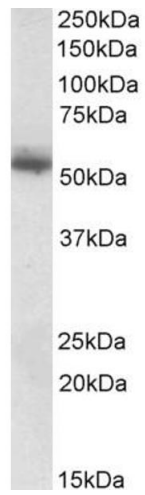
Preservative: Sodium azide

Precaution of Use: This product contains Sodium azide: a POISONOUS AND HAZARDOUS SUBSTANCE which should be handled by trained staff only.

Handling Advice: Minimize freezing and thawing.

Storage: -20 °C

Storage Comment: Aliquot and store at -20°C, with minimal freeze/thawing. A working aliquot may be refrigerated at 4°C for a few weeks and still remain viable.



### Western Blotting

**Image 1.** ABIN570993 (0.1µg/ml) staining of Human Skin lysate (35µg protein in RIPA buffer). Primary incubation was 1 hour. Detected by chemiluminescence.