

Datasheet for ABIN570995
anti-XPNPEP1 antibody (C-Term)[Go to Product page](#)

4 Images

Overview

Quantity:	100 µg
Target:	XPNPEP1
Binding Specificity:	C-Term
Reactivity:	Human, Mouse, Rat, Pig
Host:	Goat
Clonality:	Polyclonal
Conjugate:	This XPNPEP1 antibody is un-conjugated
Application:	ELISA, Western Blotting (WB), Immunohistochemistry (IHC)

Product Details

Purpose:	XPNPEP1
Immunogen:	Peptide with sequence C-LIRETQPISKQH, from the C Terminus of the protein sequence according to NP_065116.2, NP_001161076.1.
Sequence:	LIRETQPISK QH
Isotype:	IgG
Specificity:	This antibody is expected to recognize isoform 1 and 2 (NP_065116.2, NP_001161076.1).
Cross-Reactivity:	Cow, Dog, Human, Mouse, Pig, Rat
Purification:	Purified from goat serum by ammonium sulphate precipitation followed by antigen affinity chromatography using the immunizing peptide.
Grade:	Verified

Target Details

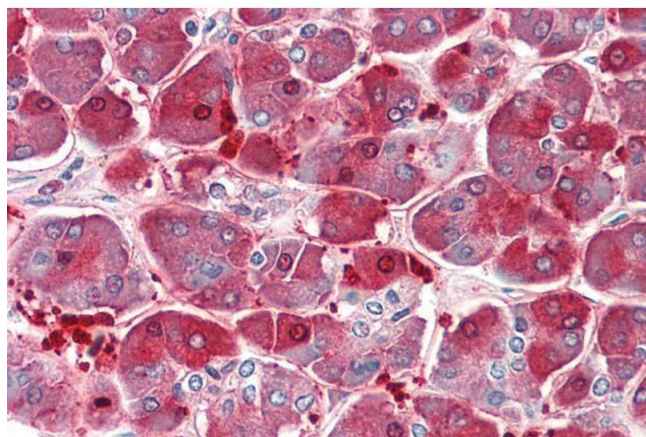
Target:	XPNPEP1
Alternative Name:	XPNPEP1 (XPNPEP1 Products)
Background:	XPNPEP1, X-prolyl aminopeptidase (aminopeptidase P) 1, soluble, SAMP, XPNPEP, XPNPEPL, XPNPEPL1, OTTHUMP00000020457, OTTHUMP00000058856, X-prolyl aminopeptidase (aminopeptidase P) 1, soluble (SAMP, XPNPEP, XPNPEPL), X-prolyl aminopeptidase (aminopeptidase
Gene ID:	7511, 170750, 170751
NCBI Accession:	NP_065116 , NP_001161076

Application Details

Application Notes:	Immunohistochemistry: Paraffin embedded Human Pancreas. Recommended concentration: 5 µg/mL. Western Blot: Approx 80 kDa band observed in Human Heart, Skeletal Muscle and Pancreas lysates and 75 kDa band observed in Mouse and Rat Small Intestines, and 75 kDa band observed in Pig Pancreas lysate (calculated MW of 69.9 kDa according to NP_065116.2). R Peptide ELISA: antibody detection limit dilution 1:32000.
Restrictions:	For Research Use only

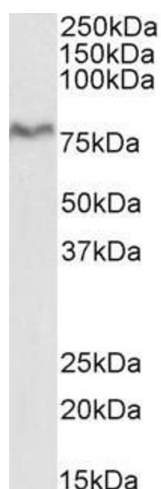
Handling

Format:	Liquid
Concentration:	0.5 mg/mL
Buffer:	Supplied at 0.5 mg/mL in Tris saline, 0.02 % sodium azide, pH 7.3 with 0.5 % bovine serum albumin.
Preservative:	Sodium azide
Precaution of Use:	This product contains Sodium azide: a POISONOUS AND HAZARDOUS SUBSTANCE which should be handled by trained staff only.
Handling Advice:	Minimize freezing and thawing.
Storage:	-20 °C
Storage Comment:	Aliquot and store at -20°C, with minimal freeze/thawing. A working aliquot may be refrigerated at 4°C for a few weeks and still remain viable.



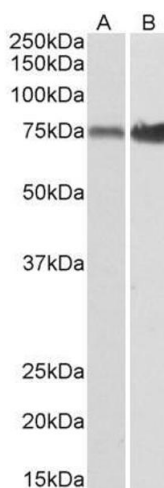
Immunohistochemistry

Image 1. ABIN570995 (5µg/ml) staining of paraffin embedded Human Pancreas. Steamed antigen retrieval with citrate buffer pH 6, AP-staining.



Western Blotting

Image 2. ABIN570995 (0.1µg/ml) staining of Pig Pancreas lysate (35µg protein in RIPA buffer). Detected by chemiluminescence.



Western Blotting

Image 3. ABIN570995 (0.1µg/ml) staining of Mouse (A) and Rat (B) Small Intestine lysates (35µg protein in RIPA buffer). Detected by chemiluminescence.

Please check the [product details page](#) for more images. Overall 4 images are available for ABIN570995.