

Datasheet for ABIN570997

**anti-PLA2R1 antibody (Internal Region)****2** Images[Go to Product page](#)

## Overview

Quantity:	100 µg
Target:	PLA2R1
Binding Specificity:	Internal Region
Reactivity:	Human
Host:	Goat
Clonality:	Polyclonal
Conjugate:	This PLA2R1 antibody is un-conjugated
Application:	ELISA, Flow Cytometry (FACS)

## Product Details

Purpose:	PLA2R1
Immunogen:	Peptide with sequence C-EKKKDTPKQHGT, from the Internal region of the protein sequence according to NP_031392.3, NP_001007268.1, NP_001182570.1.
Sequence:	EKKKDTPKQH GT
Isotype:	IgG
Specificity:	This antibody is expected to recognize all reported isoforms (NP_031392.3, NP_001007268.1, NP_001182570.1).
Cross-Reactivity:	Dog, Human, Pig
Purification:	Purified from goat serum by ammonium sulphate precipitation followed by antigen affinity chromatography using the immunizing peptide.

## Product Details

Grade: Verified

## Target Details

Target:	PLA2R1
Alternative Name:	PLA2R1 ( <a href="#">PLA2R1 Products</a> )
Background:	PLA2R1, phospholipase A2 receptor 1, 180 kDa, CLEC13C, PLA2-R, PLA2G1R, PLA2IR, PLA2R, phospholipase A2 receptor 1
Gene ID:	22925
NCBI Accession:	<a href="#">NP_031392</a> , <a href="#">NP_001007268</a> , <a href="#">NP_001182570</a>
Pathways:	<a href="#">Positive Regulation of Response to DNA Damage Stimulus</a>

## Application Details

Application Notes:	Western Blot: Preliminary testing showed a band at approx 150 kDa in HeLa cell lysate after 2 $\mu$ g/mL antibody staining (calculated MW of 153 kDa according to NP_001007268.1 Primary incubation 1 hour at room temperature. Peptide ELISA: antibody detection limit dilution 1:1000.
Comment:	<b>Flow Cytometry:</b> Flow cytometric analysis of HEK293 cells. Recommended concentration: 10ug/ml.
Restrictions:	For Research Use only

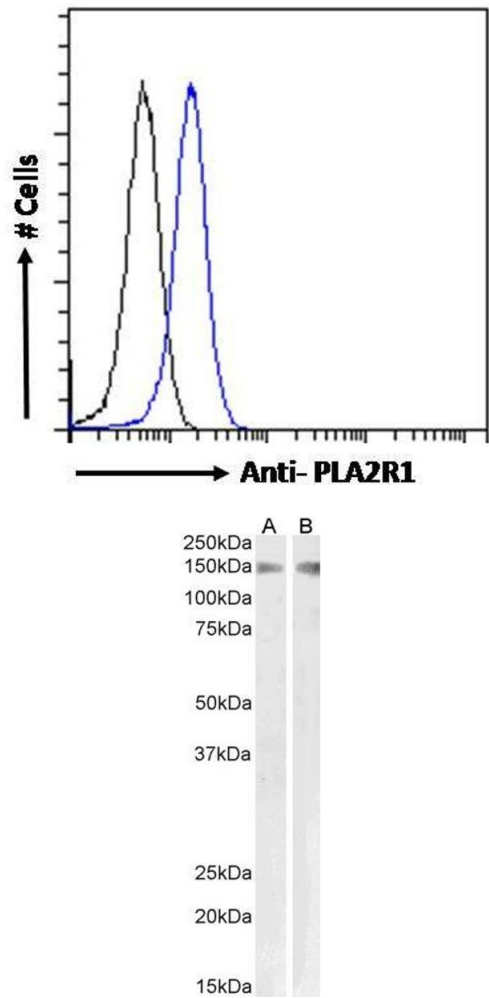
## Handling

Format:	Liquid
Concentration:	0.5 mg/mL
Buffer:	Supplied at 0.5 mg/mL in Tris saline, 0.02 % sodium azide, pH 7.3 with 0.5 % bovine serum albumin.
Preservative:	Sodium azide
Precaution of Use:	This product contains Sodium azide: a POISONOUS AND HAZARDOUS SUBSTANCE which should be handled by trained staff only.
Handling Advice:	Minimize freezing and thawing.
Storage:	-20 °C

Handling

Storage Comment: Aliquot and store at -20°C, with minimal freeze/thawing. A working aliquot may be refrigerated at 4°C for a few weeks and still remain viable.

Images



Flow Cytometry

**Image 1.** ABIN570997 Flow cytometric analysis of paraformaldehyde fixed HEK293 cells (blue line), permeabilized with 0.5% Triton. Primary incubation 1hr (10ug/ml) followed by Alexa Fluor 488 secondary antibody (1ug/ml). IgG control: Unimmunized goat IgG (black line) followed by Alexa Fluor 488 secondary antibody.

Western Blotting

**Image 2.** Approx 150kDa band observed in Human Kidney and Pig Lung lysates (calculated MW of 153kDa according to NP\_001007268.1). Recommended concentration: 1-3µg/ml.