



[Go to Product page](#)

Datasheet for ABIN570999
anti-E2F6 antibody (C-Term)

1 Image

Overview

Quantity:	100 µg
Target:	E2F6
Binding Specificity:	C-Term
Reactivity:	Human
Host:	Goat
Clonality:	Polyclonal
Conjugate:	This E2F6 antibody is un-conjugated
Application:	Western Blotting (WB), ELISA

Product Details

Purpose:	E2F6
Immunogen:	Peptide with sequence C-NPQQSEELLEVS _N , from the C Terminus of the protein sequence according to NP_937987.2.
Sequence:	NPQQSEELLE VSN
Isotype:	IgG
Cross-Reactivity:	Cow, Dog, Human
Purification:	Purified from goat serum by ammonium sulphate precipitation followed by antigen affinity chromatography using the immunizing peptide.
Grade:	Verified

Target Details

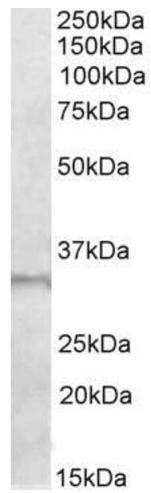
Target:	E2F6
Alternative Name:	E2F6 (E2F6 Products)
Background:	E2F6, E2F transcription factor 6, E2F-6, MGC111545, E2F transcription factor 6, isoform 1
Gene ID:	1876
NCBI Accession:	NP_937987

Application Details

Application Notes:	Western Blot: Approx 33 kDa band observed in Human Skeletal Muscle lysates (calculated MW of 31.8 kDa according to NP_937987.2). Recommended concentration: 1-3 µg/mL. Peptide ELISA: antibody detection limit dilution 1:4000.
Restrictions:	For Research Use only

Handling

Format:	Liquid
Concentration:	0.5 mg/mL
Buffer:	Supplied at 0.5 mg/mL in Tris saline, 0.02 % sodium azide, pH 7.3 with 0.5 % bovine serum albumin.
Preservative:	Sodium azide
Precaution of Use:	This product contains Sodium azide: a POISONOUS AND HAZARDOUS SUBSTANCE which should be handled by trained staff only.
Handling Advice:	Minimize freezing and thawing.
Storage:	-20 °C
Storage Comment:	Aliquot and store at -20°C, with minimal freeze/thawing. A working aliquot may be refrigerated at 4°C for a few weeks and still remain viable.



Western Blotting

Image 1. ABIN570999 (1 μ g/ml) staining of Human Skeletal Muscle lysate (35 μ g protein in RIPA buffer). Primary incubation was 1 hour. Detected by chemiluminescence.