

Datasheet for ABIN571001
anti-PSMB8 antibody (C-Term)[Go to Product page](#)

2 Images

Overview

Quantity:	100 µg
Target:	PSMB8
Binding Specificity:	C-Term
Reactivity:	Human
Host:	Goat
Clonality:	Polyclonal
Conjugate:	This PSMB8 antibody is un-conjugated
Application:	Western Blotting (WB), Immunohistochemistry (IHC), ELISA

Product Details

Purpose:	LMP7
Immunogen:	Peptide with sequence C-DVSDLLHQYREANQ, from the C Terminus of the protein sequence according to NP_004150.1, NP_683720.2.
Sequence:	DVSDLLHQYR EANQ
Isotype:	IgG
Specificity:	This antibody is expected to recognize both reported isoforms (NP_004150.1, NP_683720.2).
Cross-Reactivity:	Cow, Dog, Human, Mouse, Pig, Rat
Purification:	Purified from goat serum by ammonium sulphate precipitation followed by antigen affinity chromatography using the immunizing peptide.
Grade:	Verified

Target Details

Target:	PSMB8
Alternative Name:	PSMB8 (PSMB8 Products)
Background:	PSMB8, proteasome (prosome, macropain) subunit, beta type, 8 (large multifunctional peptidase 7), D6S216, D6S216E, LMP7, MGC1491, PSMB5i, RING10, beta5i, OTTHUMP00000029420, OTTHUMP00000029421, OTTHUMP00000062981, low molecular weight protein 7, macropain
Gene ID:	5696, 16913, 24968
NCBI Accession:	NP_004150 , NP_683720
Pathways:	Mitotic G1-G1/S Phases , DNA Replication , Synthesis of DNA

Application Details

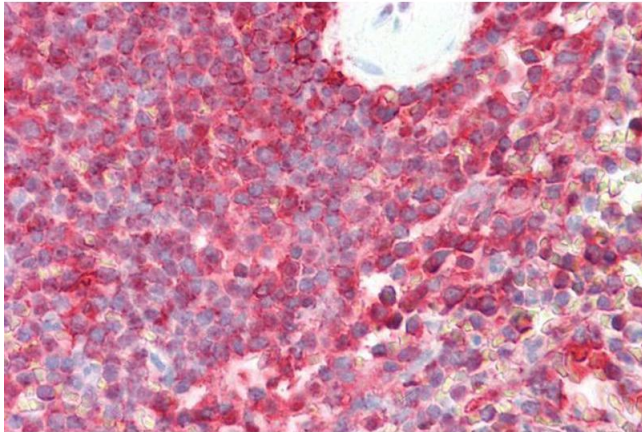
Application Notes:	Immunohistochemistry: Paraffin embedded Human Spleen. Recommended concentration: 3.75 µg/mL. Western Blot: Approx 22 kDa band observed in Human Liver, Lung and Lymph Node lysates (calculated MW of 29.8 kDa according to precursor NP_004150.1). The observed molecular weight corresponds to earlier findings in literature with different antibodies (Sch Peptide ELISA: antibody detection limit dilution 1:8000.
Restrictions:	For Research Use only

Handling

Format:	Liquid
Concentration:	0.5 mg/mL
Buffer:	Supplied at 0.5 mg/mL in Tris saline, 0.02 % sodium azide, pH 7.3 with 0.5 % bovine serum albumin.
Preservative:	Sodium azide
Precaution of Use:	This product contains Sodium azide: a POISONOUS AND HAZARDOUS SUBSTANCE which should be handled by trained staff only.
Handling Advice:	Minimize freezing and thawing.
Storage:	-20 °C
Storage Comment:	Aliquot and store at -20°C, with minimal freeze/thawing. A working aliquot may be refrigerated

at 4°C for a few weeks and still remain viable.

Images



Immunohistochemistry

Image 1. ABIN571001 (3.75µg/ml) staining of paraffin embedded Human Spleen. Steamed antigen retrieval with citrate buffer pH 6, AP-staining.



Western Blotting

Image 2. ABIN571001 (0.01µg/ml) staining of Human Liver lysate (35µg protein in RIPA buffer). Detected by chemiluminescence.