

Datasheet for ABIN5710019

NPHP1 Protein (AA 1-109, partial) (GST tag)[Go to Product page](#)**1** Image

Overview

Quantity:	100 µg
Target:	NPHP1
Protein Characteristics:	AA 1-109, partial
Origin:	Human
Source:	Escherichia coli (E. coli)
Protein Type:	Recombinant
Purification tag / Conjugate:	This NPHP1 protein is labelled with GST tag.
Application:	SDS-PAGE (SDS)

Product Details

Sequence:	MLARRQRDPL QALRRRNQEL KQQVDSLLSE SQLKEALEPN KRQHIYQRCI QLKQAIDENK NALQKLSKAD ESAPVANYNQ RKEEEHTLLD KLTQQLQGLA VTISRENITE
Purification:	SDS-PAGE
Purity:	> 90 %

Target Details

Target:	NPHP1
Alternative Name:	NPHP1 (NPHP1 Products)
Background:	Together with BCAR1 it may play a role in the control of epithelial cell polarity. Involved in the organization of apical junctions in kidney cells together with NPHP4 and RPGRIP1L/NPHP8 . Does not se to be strictly required for ciliogenesis . Ses to help to recruit PTK2B/PYK2 to cell

Target Details

matrix adhesions, thereby initiating phosphorylation of PTK2B/PYK2 and PTK2B/PYK2-dependent signaling. May play a role in the regulation of intraflagellar transport (IFT) during cilia assembly. Required for normal retina development. In connecting photoreceptor cilia influences the movement of some IFT proteins such as IFT88 and WDR19. Involved in spermatogenesis.

Molecular Weight: 40.3 kDa

UniProt: [O15259](#)

Application Details

Application Notes: Optimal working dilution should be determined by the investigator.

Restrictions: For Research Use only

Handling

Format: Liquid

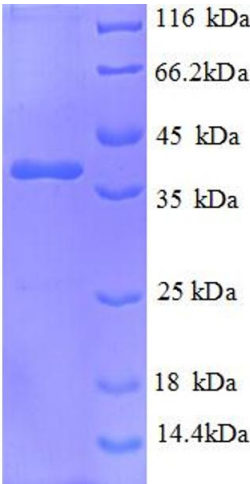
Concentration: 0.1-2 mg/mL

Buffer: 20 mM Tris-HCl based buffer, pH 8.0

Storage: -80 °C, 4 °C, -20 °C

Storage Comment: Store at -20°C, for extended storage, conserve at -20°C or -80°C. Repeated freezing and thawing is not recommended. Store working aliquots at 4°C for up to one week.

Images



SDS-PAGE

Image 1.