

Datasheet for ABIN571002

**anti-PSMB10 antibody (Internal Region)****3** Images[Go to Product page](#)

## Overview

Quantity:	100 µg
Target:	PSMB10
Binding Specificity:	Internal Region
Reactivity:	Human
Host:	Goat
Clonality:	Polyclonal
Conjugate:	This PSMB10 antibody is un-conjugated
Application:	Western Blotting (WB), ELISA, Immunohistochemistry (IHC)

## Product Details

Purpose:	MECL1
Immunogen:	Peptide with sequence C-PTEPVKRSGRYH, from the internal region of the protein sequence according to NP_002792.1.
Sequence:	PTEPVKRSGR YH
Isotype:	IgG
Cross-Reactivity:	Human
Purification:	Purified from goat serum by ammonium sulphate precipitation followed by antigen affinity chromatography using the immunizing peptide.
Grade:	Verified

## Target Details

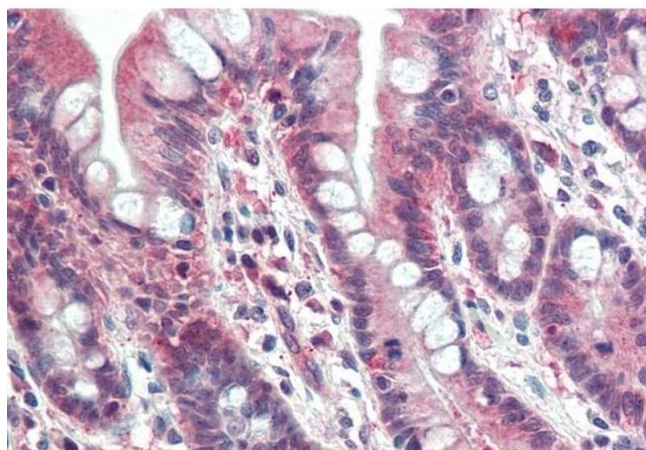
Target:	PSMB10
Alternative Name:	PSMB10 ( <a href="#">PSMB10 Products</a> )
Background:	PSMB10, proteasome (prosome, macropain) subunit, beta type, 10, LMP10, MECL1, MGC1665, beta2i, macropain subunit MECL-1, multicatalytic endopeptidase complex subunit MECL-1, proteasome MECL-1, proteasome beta 10 subunit, proteasome catalytic subunit 2i, p
Gene ID:	5699, 19171, 291983
NCBI Accession:	<a href="#">NP_002792</a>
Pathways:	<a href="#">Mitotic G1-G1/S Phases</a> , <a href="#">DNA Replication</a> , <a href="#">Synthesis of DNA</a>

## Application Details

Application Notes:	Immunohistochemistry: Paraffin embedded Human Tonsil and Small Intestine. Recommended concentration: 5 µg/mL. Western Blot: Approx 26 kDa band observed in Human, Liver, Lung and Lymph Node lysates (calculated MW of 28.9 kDa according to NP_002792.1). Recommended concentration: 0.3-1 µg/mL. Peptide ELISA: antibody detection limit dilution 1:8000.
Restrictions:	For Research Use only

## Handling

Format:	Liquid
Concentration:	0.5 mg/mL
Buffer:	Supplied at 0.5 mg/mL in Tris saline, 0.02 % sodium azide, pH 7.3 with 0.5 % bovine serum albumin.
Preservative:	Sodium azide
Precaution of Use:	This product contains Sodium azide: a POISONOUS AND HAZARDOUS SUBSTANCE which should be handled by trained staff only.
Handling Advice:	Minimize freezing and thawing.
Storage:	-20 °C
Storage Comment:	Aliquot and store at -20°C, with minimal freeze/thawing. A working aliquot may be refrigerated at 4°C for a few weeks and still remain viable.



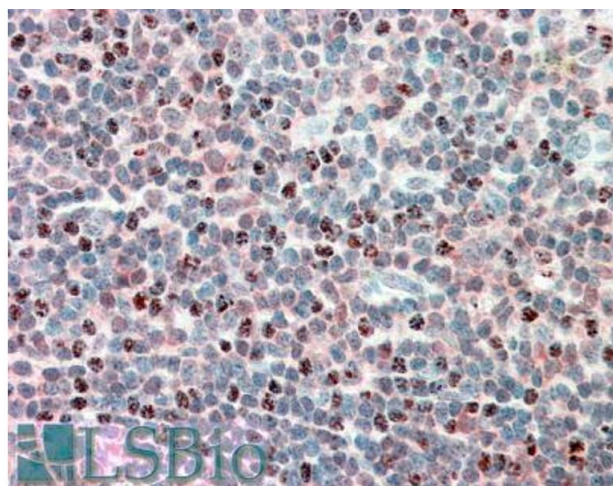
#### Immunohistochemistry

**Image 1.** ABIN571002 (5 µg/mL) staining of paraffin embedded Human Small Intestine. Steamed antigen retrieval with citrate buffer pH 6, AP-staining.



#### Western Blotting

**Image 2.** ABIN571002 (0.3 µg/ml) staining of Human Lung lysate (35 µg protein in RIPA buffer). Primary incubation was 1 hour. Detected by chemiluminescence.



#### Immunohistochemistry

**Image 3.** ABIN571002 (5 µg/ml) staining of paraffin embedded Human Tonsil. Steamed antigen retrieval with citrate buffer pH 6, AP-staining.