

Datasheet for ABIN571004
anti-SATB1 antibody (Internal Region)



[Go to Product page](#)

2 Images

Overview

Quantity:	100 µg
Target:	SATB1
Binding Specificity:	Internal Region
Reactivity:	Human
Host:	Goat
Clonality:	Polyclonal
Conjugate:	This SATB1 antibody is un-conjugated
Application:	Western Blotting (WB), Immunohistochemistry (IHC), ELISA, Immunofluorescence (IF), Flow Cytometry (FACS)

Product Details

Purpose:	SATB1
Immunogen:	Peptide with sequence C-ESDEENRQKTRPRT, from the internal region of the protein sequence according to NP_002962.1.
Sequence:	ESDEENRQKT RPRT
Isotype:	IgG
Cross-Reactivity:	Cow, Human, Mouse, Rat
Purification:	Purified from goat serum by ammonium sulphate precipitation followed by antigen affinity chromatography using the immunizing peptide.
Grade:	Verified

Target Details

Target:	SATB1
Alternative Name:	SATB1 (SATB1 Products)
Background:	SATB1, SATB homeobox 1, DNA-binding protein SATB1, special AT-rich sequence binding protein 1, special AT-rich sequence binding protein 1 (binds to nuclear matrix/scaffold-associating DNA's)
Gene ID:	6304, 20230, 316164
NCBI Accession:	NP_002962
Pathways:	Caspase Cascade in Apoptosis , Activated T Cell Proliferation

Application Details

Application Notes:	Immunohistochemistry: In paraffin embedded Human Thymus shows select nuclear staining. Recommended concentration: 3-5 µg/mL. Western Blot: Approx. 90 kDa band observed in nuclear lysates of cell lines A431 and Jurkat and in lysates of cell lines U251 and Daudi (calculated MW of 89.0 kDa according to NP_001182399.1). Recommended concentration: 0.1-0.5 µg/mL. Primary incubation 1 h Peptide ELISA: antibody detection limit dilution 1:32000.
Comment:	Immunofluorescence: Strong expression of the protein seen in the nuclei of Jurkat cells. Recommended concentration: 10µg/ml. Flow Cytometry: Flow cytometric analysis of Jurkat cells. Recommended concentration: 10ug/ml.
Restrictions:	For Research Use only

Handling

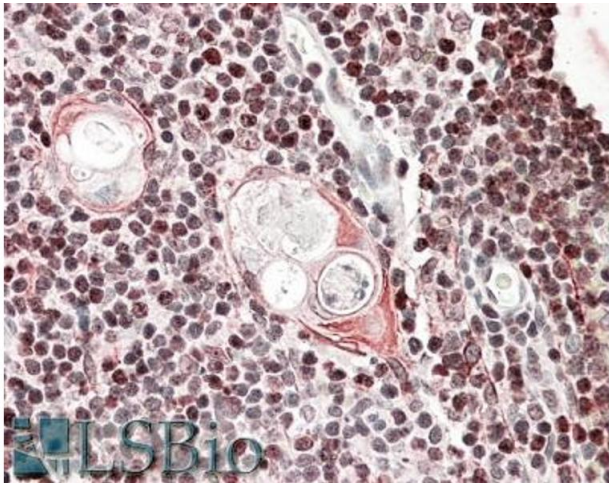
Format:	Liquid
Concentration:	0.5 mg/mL
Buffer:	Supplied at 0.5 mg/mL in Tris saline, 0.02 % sodium azide, pH 7.3 with 0.5 % bovine serum albumin.
Preservative:	Sodium azide
Precaution of Use:	This product contains Sodium azide: a POISONOUS AND HAZARDOUS SUBSTANCE which should be handled by trained staff only.
Handling Advice:	Minimize freezing and thawing.

Handling

Storage: -20 °C

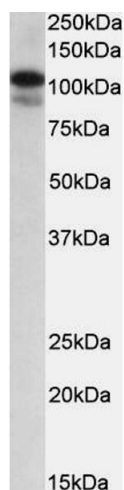
Storage Comment: Aliquot and store at -20°C, with minimal freeze/thawing. A working aliquot may be refrigerated at 4°C for a few weeks and still remain viable.

Images



Immunohistochemistry

Image 1. ABIN571004 (3.8µg/ml) staining of paraffin embedded Human Thymus. Steamed antigen retrieval with citrate buffer pH 6, AP-staining.



Western Blotting

Image 2. ABIN571004 (0.3µg/ml) staining of MOLT4 lysate (35µg protein in RIPA buffer). Primary incubation was 1 hour. Detected by chemiluminescence.