

Datasheet for ABIN571005
anti-WNT9B antibody (Internal Region)



[Go to Product page](#)

2 Images

Overview

Quantity:	100 µg
Target:	WNT9B
Binding Specificity:	Internal Region
Reactivity:	Human, Mouse
Host:	Goat
Clonality:	Polyclonal
Conjugate:	This WNT9B antibody is un-conjugated
Application:	ELISA, Western Blotting (WB)

Product Details

Purpose:	WNT15 / WNT9B
Immunogen:	Peptide with sequence C-KRGNKDLRARADA, from the internal region of the protein sequence according to NP_003387.1.
Sequence:	KRGNKDLRAR ADA
Isotype:	IgG
Cross-Reactivity:	Human, Mouse, Rat
Purification:	Purified from goat serum by ammonium sulphate precipitation followed by antigen affinity chromatography using the immunizing peptide.
Grade:	Verified

Target Details

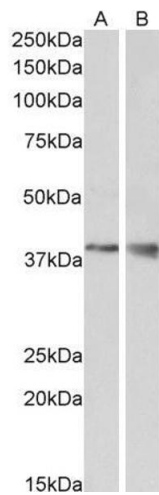
Target:	WNT9B
Alternative Name:	WNT9B (WNT9B Products)
Background:	WNT9B, wingless-type MMTV integration site family, member 9B, WNT14B, WNT15, wingless-type MMTV integration site family, member 15
Gene ID:	7484, 22412, 303586
NCBI Accession:	NP_003387
Pathways:	WNT Signaling, Tube Formation

Application Details

Application Notes:	Western Blot: Approx 38 kDa band observed in Human Brain Cerebellum lysates and in Mouse Kidney and Brain lysates (calculated MW of 39 kDa according to NP_003387.1). Recommended concentration: 0.3-1 µg/mL. Peptide ELISA: antibody detection limit dilution 1:8000.
Restrictions:	For Research Use only

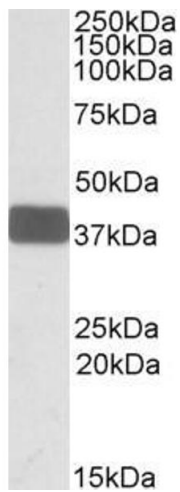
Handling

Format:	Liquid
Concentration:	0.5 mg/mL
Buffer:	Supplied at 0.5 mg/mL in Tris saline, 0.02 % sodium azide, pH 7.3 with 0.5 % bovine serum albumin.
Preservative:	Sodium azide
Precaution of Use:	This product contains Sodium azide: a POISONOUS AND HAZARDOUS SUBSTANCE which should be handled by trained staff only.
Handling Advice:	Minimize freezing and thawing.
Storage:	-20 °C
Storage Comment:	Aliquot and store at -20°C, with minimal freeze/thawing. A working aliquot may be refrigerated at 4°C for a few weeks and still remain viable.



Western Blotting

Image 1. ABIN571005 (1 μ g/ml) staining of Mouse Kidney (A) and Brain (B) lysate (35 μ g protein in RIPA buffer). Primary incubation was 1 hour. Detected by chemiluminescence.



Western Blotting

Image 2. ABIN571005 (0.3 μ g/ml) staining of Human Brain Cerebellum lysate (35 μ g protein in RIPA buffer). Primary incubation was 1 hour. Detected by chemiluminescence.