

Datasheet for ABIN571008
anti-ERLIN1 antibody (C-Term)[Go to Product page](#)

1 Image

Overview

Quantity:	100 µg
Target:	ERLIN1
Binding Specificity:	C-Term
Reactivity:	Human
Host:	Goat
Clonality:	Polyclonal
Conjugate:	This ERLIN1 antibody is un-conjugated
Application:	Western Blotting (WB), ELISA

Product Details

Purpose:	KEO4 / ERLIN1
Immunogen:	C-EALEPSGENVIQNKE
Sequence:	EALEPSGENV IQNKE
Isotype:	IgG
Specificity:	Reported variants represent identical protein: NP_006450.2, NP_001094096.1
Cross-Reactivity:	Human
Purification:	Purified from goat serum by ammonium sulphate precipitation followed by antigen affinity chromatography using the immunizing peptide.
Grade:	Verified

Target Details

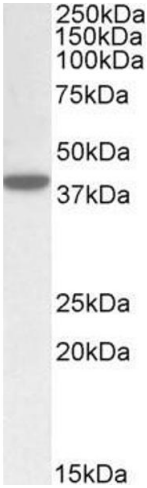
Target:	ERLIN1
Alternative Name:	ERLIN1 (ERLIN1 Products)
Background:	ERLIN1, ER lipid raft associated 1, C10orf69, Erlin-1, KE04, KEO4, SPFH1, Band_7 23-211 Keo4 (Interim) similar to C.elegans protein C42C1.9, OTTHUMP00000059425, SPFH domain family, member 1
Gene ID:	10613
NCBI Accession:	NP_006450

Application Details

Application Notes:	Western Blot: Approx 38 kDa band observed in Human Placenta lysates (calculated MW of 39.2 kDa according to NP_006450.2). Recommended concentration: 0.3-1 µg/mL. Peptide ELISA: antibody detection limit dilution 1:8000.
Restrictions:	For Research Use only

Handling

Format:	Liquid
Concentration:	0.5 mg/mL
Buffer:	Supplied at 0.5 mg/mL in Tris saline, 0.02 % sodium azide, pH 7.3 with 0.5 % bovine serum albumin.
Preservative:	Sodium azide
Precaution of Use:	This product contains Sodium azide: a POISONOUS AND HAZARDOUS SUBSTANCE which should be handled by trained staff only.
Handling Advice:	Minimize freezing and thawing.
Storage:	-20 °C
Storage Comment:	Aliquot and store at -20°C, with minimal freeze/thawing. A working aliquot may be refrigerated at 4°C for a few weeks and still remain viable.



Western Blotting

Image 1. ABIN571008 (0.5µg/ml) staining of Human Placenta lysate (35µg protein in RIPA buffer). Primary incubation was 1 hour. Detected by chemiluminescence.