



[Go to Product page](#)

Datasheet for ABIN571011
anti-GGCX antibody (C-Term)

2 Images

Overview

Quantity:	100 µg
Target:	GGCX
Binding Specificity:	C-Term
Reactivity:	Human
Host:	Goat
Clonality:	Polyclonal
Conjugate:	This GGCX antibody is un-conjugated
Application:	ELISA, Western Blotting (WB), Immunohistochemistry (IHC)

Product Details

Purpose:	GGCX
Immunogen:	Peptide with sequence C-PPESNPDPVHSE, from the C Terminus of the protein sequence according to NP_000812.2, NP_001135741.1.
Sequence:	PPESNPDPVH SE
Isotype:	IgG
Specificity:	This antibody is expected to recognize both isoforms (NP_000812.2, NP_001135741.1).
Cross-Reactivity:	Dog, Human
Purification:	Purified from goat serum by ammonium sulphate precipitation followed by antigen affinity chromatography using the immunizing peptide.
Grade:	Verified

Target Details

Target:	GGCX
Alternative Name:	GGCX (GGCX Products)
Background:	GGCX, gamma-glutamyl carboxylase, FLJ26629, VKCFD1, vitamin K-dependent gamma-carboxylase
Gene ID:	2677
NCBI Accession:	NP_000812 , NP_001135741
Pathways:	SARS-CoV-2 Protein Interactome

Application Details

Application Notes:	<p>Immunohistochemistry: In paraffin embedded Human Kidney shows distinct staining in the cytoplasm of epithelial cells. Recommended concentration: 5-10 µg/mL.</p> <p>Western Blot: Approx 85 kDa band observed in Human Muscle lysates (calculated MW of 85 kDa according to NP_000812.2). Recommended concentration: 0.3-1 µg/mL. Primary incubation was 1 hour.</p> <p>Peptide ELISA: antibody detection limit dilution 1:32000.</p>
Restrictions:	For Research Use only

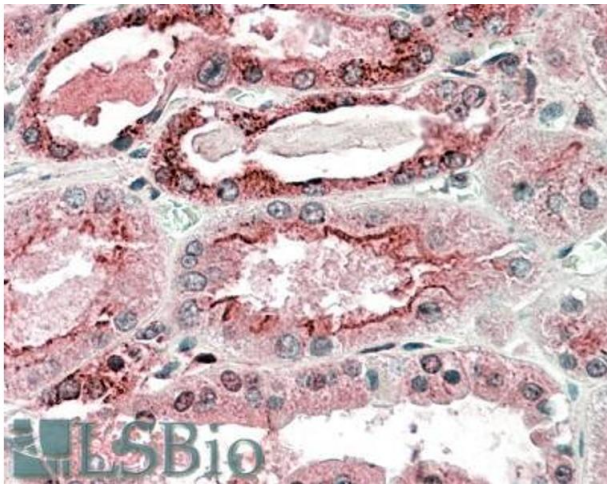
Handling

Format:	Liquid
Concentration:	0.5 mg/mL
Buffer:	Supplied at 0.5 mg/mL in Tris saline, 0.02 % sodium azide, pH 7.3 with 0.5 % bovine serum albumin.
Preservative:	Sodium azide
Precaution of Use:	This product contains Sodium azide: a POISONOUS AND HAZARDOUS SUBSTANCE which should be handled by trained staff only.
Handling Advice:	Minimize freezing and thawing.
Storage:	-20 °C
Storage Comment:	Aliquot and store at -20°C, with minimal freeze/thawing. A working aliquot may be refrigerated at 4°C for a few weeks and still remain viable.



Western Blotting

Image 1. ABIN571011 (0.3 µg/mL) staining of Human Muscle lysate (35 µg protein in RIPA buffer). Detected by chemiluminescence.



Immunohistochemistry

Image 2. ABIN571011 (5µg/ml) staining of paraffin embedded Human Kidney. Steamed antigen retrieval with citrate buffer pH 6, AP-staining.